



**BAUDAT**  
GmbH & Co. KG

[www.baudat.de](http://www.baudat.de)

Product catalog  
2022



**Our company BAUDAT GmbH & Co. KG, founded in 1966, has stood for the production of high-quality tools for more than 55 years.**

According to our company motto „Quality in your hand!“ our 55 employees produce high quality tools at our long established location in the south of Germany.

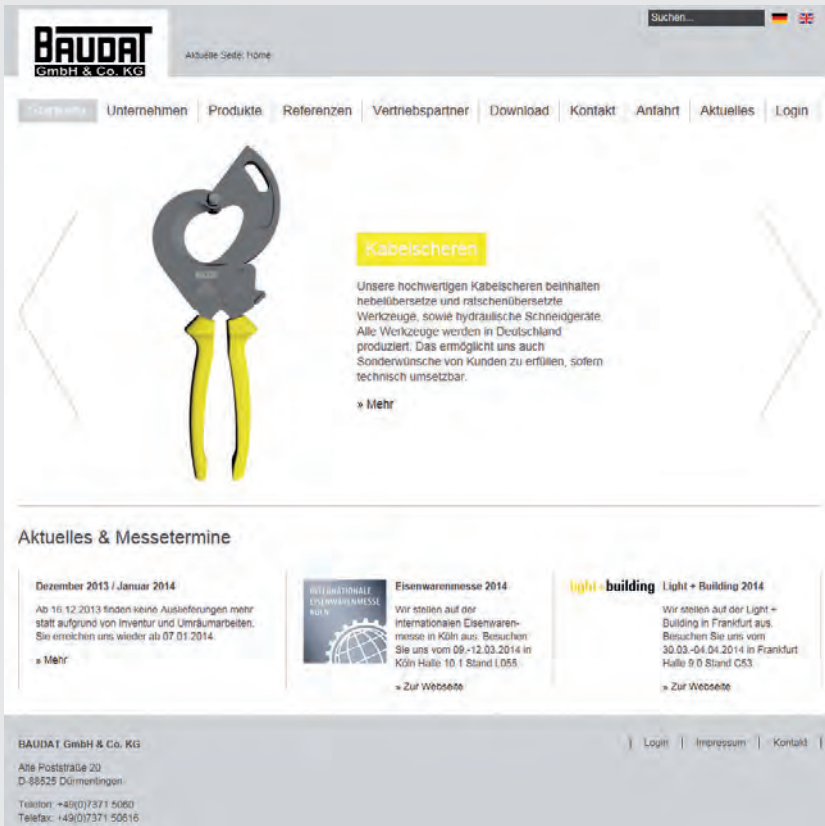
We develop, produce and deliver special tools for a number of major companies in the sanitary, telecommunication, power supply networks and automotive industry, many of which are custom made to provide particular client solutions. In these cases we are the customer's „extended workbench“ and by this means we aim to build long lasting and successful cooperation with our clients.

Our principal resources are self trained craftsmen and the technical know-how of our engineering department. Combined with our highly flexible manufacturing and marketing these resources achieve high quality solutions and products, which are the key to our customer relations, and therefore to our own success.

We offer quality  
„Made in Germany“  
in your hand!

**BAUDAT**  
GmbH & Co. KG

Alte Poststrasse 20  
D-88525 Dürmentingen  
Tel.: +49 (0) 7371 / 506-0  
Fax +49 (0) 7371 / 506-16  
Email: [info@baudat.de](mailto:info@baudat.de)  
[www.baudat.de](http://www.baudat.de)



Of course you can also find on our homepage [www.baudat.de](http://www.baudat.de) our whole product range.

You also will be informed about current events and Exhibitions.

**Quality standard:**

**Location:**







New products

6 - 7



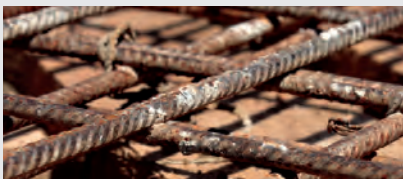
Cable cutters

8 - 23



Wire rope cutters

24 - 37



Bolt cutters

38 - 42



old plate punchers program

43 - 58

new plate punchers program

59 - 71



Hydraulic pumps

72 - 79



Special tools

80 - 82







## BAUDAT - New products

Baudat Cutting units for  
Bosch Cordless drill/driver GSR 12V-35FC Professional

Product advantages at a glance:

Inexpensive variant for battery cutting

Extremely powerful thanks to the latest battery technology at 12 V. The competition needs 18 V for this

Use of several cutting units with one drive through the Flexi-Click system from Bosch

When the cutting attachment is not in use, the cordless drill can be used as usual

This tool has a purely mechanical drive and is less susceptible than hydraulic drives

Electronics arm. Therefore suitable for construction sites

The warranty for the Bosch cordless drill remains unaffected. The Bosch service network can be used

The cutting unit can be rotated 360°

The Bosch cordless drill can be obtained anywhere because it is a standard product

Sustainable design (low in plastic). This detachable cutting unit is 98% recyclable

Patented / patented tool system

Cutting unit for Cu-Al-cabel on page 14

Cutting unit for wire ropes on page 31





## New generation plate punchers 8X

Product advantages at a glance:

A plate puncher for steel and stainless steel plates up to max. 3 mm

lighter and more compact than our previous generations

all round punching tools are compatible with other manufacturers on the market

More on page 59



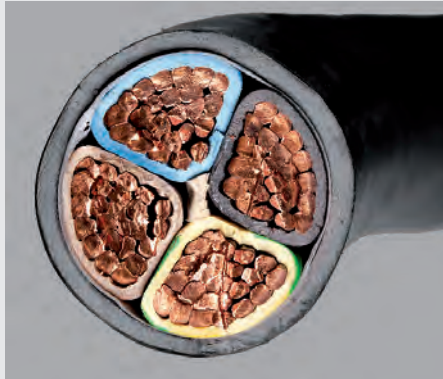
- Cutting edges with 3-fold cleavage of  $\text{Ø } 15,2 \text{ mm}$  to  $\text{Ø } 60 \text{ mm}$ , therefore no jamming in the matrix
- One cutting edges and matrix for steel and stainless steel plates
- Matrix with four crosshair markins for easy, central alignment



### INFO:

Our old plate punchers program  
(p.43 to p.57)  
only while stocks last !





Selection table cable cutters

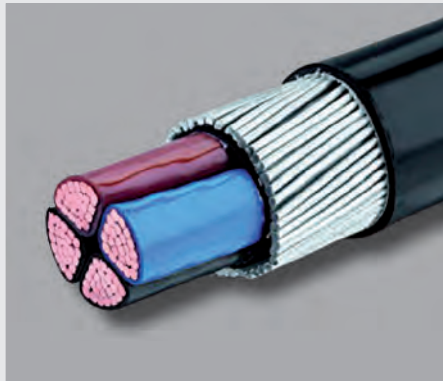
9

Leverage cable cutters

10

Ratchet cable cutters  
 K- and SC-Serie

10 - 13



Cordless cable cutting units  
 with accessories

**NEW**

14 - 15

Cable cutter for steel-armoured cable

16



Stationary cable cutters

17

Ratchet cable cutters  
 EC- and HC-Serie

18

Hydraulic cable cutters  
 with accessories

19 - 23



Selection table cable cutters

Cutting material Cu-Al-cable up to	further cutting material	Cutting tool	Order no.	page
Ø 20 mm		E1	80-415	10
Ø 24 mm		K24	80-152	10
Ø 31 mm		E2	80-413	10
Ø 32 mm		K32	80-155	10
		K32 i		11
	Fine stranded Cu-cables	K32 Flex	80-162	10
Ø 35 mm		SK 35	80-195	11
		AF35 C	80-349	14
Ø 38 mm		EC38	80-112	18
Ø 40 mm		SC40	80-058	12
Ø 45 mm	Steel armoured Cu-Al-cables	SCARZ45	80-043	16
Ø 50 mm		E3	80-429	10
Ø 52 mm		SR52	80-051	17
Ø 55 mm		SC55	80-057	12
		EC55	80-111	18
		SCK55	80-069	12
		SCZ55	80-067	12
		HC55	80-900	18
		AC55 C	80-346	14
Ø 60 mm	Telephone cable	E3 Flex	80-412	10
		SK60	80-190	13
		HS3 6 D CU	60-138	19
		HS3 6 RH CU	60-140	19
Ø 65 mm		KB 10/65 RH	60-127	22
Ø 70 mm		SCZ70	80-050	12
Ø 80 mm		ER80	80-151	13
		SER80	80-165	17
Ø 92 mm		HC92	80-903	18
Ø 95 mm		SCZ95	80-060	12
Ø 100 mm		HS4 D CU	60-135	20
		HS4 RH CU	60-137	20
		KB 20/100 RH	60-125	22
Ø 130 mm		HS5 D CU	60-046	21
		HS5 RH CU	60-084	21
Ø 160 mm		KB 30/160 RH	60-020	23
Ø 200 mm		KB 30/200 RH	60-146	23

The hydraulic cable cutters described on the following pages only represent an overview with the general properties. Depending on the application, the hydraulic cable cutters can be operated with our foot, motor and battery pumps. An adaption to individual applications is generally possible.

We would be glad to provide you with the optimal combination for your application.



**Leverage two handed cable cutters**

Description:	E1	E2	E3	E3 Flex
Order no.:	80-415	80-413	80-429	80-412
Capacity:	Cu-Al-cable up to max. Ø 20 mm or 120 mm <sup>2</sup>	Cu-Al-cable up to max. Ø 31 mm or 250 mm <sup>2</sup>	Cu-Al-cable up to max. Ø 50 mm or 500 mm <sup>2</sup>	Telephone cable up to max. Ø 60 mm
Length:	370 mm	525 mm	775 mm	775 mm
Weight:	0,7 kg	1,4 kg	3,1 kg	3,0 kg
In case of different cutting material, please contact the manufacturer				
Surface-grinded blades made up of high-coated steel				
Sickle-shaped, rounded blades assure precise cutting				
Top stability and minimal dead weight				
All parts replaceable				
Stationary versions are also available on request				



**Ratchet single handed cable cutters**

Description:	K24	K32	K32 Flex
Order no.:	80-152	80-155	80-162
Capacity:	Cu-Al-cable up to max. Ø 24 mm Cu-cable max. 180 mm <sup>2</sup> Al-cable max. 250 mm <sup>2</sup>	Cu-Al-cable up to max. Ø 32 mm Cu-cable max. 250 mm <sup>2</sup> Al-cable max. 320 mm <sup>2</sup>	Flexible and fine stranded Cu-cable up to max. Ø 32 mm or max. 250 mm <sup>2</sup>
Length:	290 mm	310 mm	310 mm
Weight:	0,9 kg	1,0 kg	1,0 kg
In case of different cutting material, please contact the manufacturer			
Surface-grinded blades made up of high-coated steel			
Blades releasable at any point during cutting			
Open jaws for faster operation and greater access to restricted spaces			
The blade returns to its starting position by spring return			
All parts replaceable			





**Ratchet single handed cable cutter,  
insulated up to 1000 V (K32i)**

Order no.:	252532	Ratchet single handed cable cutter, insulated
	252550	Isolation cover

Capacity:	Cu-Al-cable up to max. Ø 32 mm Cu-cable max. 250 mm <sup>2</sup> Al-cable max. 320 mm <sup>2</sup>
-----------	--

Length:	310 mm
---------	--------

Weight:	1,1 kg
---------	--------

No cumbersome folding down of the knife

The cutting process can be interrupted in any position

The blade returns to its starting position by spring return

Professional multi-layer immersion insulation

Available from our partner Lemp

[www.galemp.de](http://www.galemp.de)

**NEW**



**Ratchet single handed cable cutter**

Description:	SK35
--------------	------

Order no.:	80-195
------------	--------

Capacity:	Cu-Al-cable up to max. Ø 35 mm Cu-cable max. 300 mm <sup>2</sup> Al-cable max. 320 mm <sup>2</sup>
-----------	--

Length:	280 mm
---------	--------

Weight:	1,2 kg
---------	--------

In case of different cutting material, please contact the manufacturer

Surface-grinded blades made up of high-coated steel

Open jaws for faster operation and greater access to restricted spaces

Blades releasable at any point during cutting

The blade returns to its starting position by spring return

Fatigue-proof cutting as a result of ergonomic form and soft material of handles

All parts replaceable



**Ratchet single handed cable cutters**

Description:	SC40	SC55
Order no.:	80-058	80-057
Capacity:	Cu-Al-cable up to max. Ø 40 mm	Cu-Al-cable up to max. Ø 55 mm
Length:	240 mm	315 mm
Weight:	0,8 kg	1,6 kg
In case of different cutting material, please contact the manufacturer		
Surface-grinded blades made up of high-coated steel		
Blades releasable at any point during cutting		
Fatigue-proof cutting as a result of ergonomic form and soft material of handles		
All parts replaceable		



**Ratchet two handed cable cutters**

Description:	SCK55	SCZ55	SCZ70	SCZ95
Order no.:	80-069	80-067	80-050	80-060
Capacity:	Cu-Al-cable up to max. Ø 55 mm		Cu-Al-cable up to max. Ø 70 mm	Cu-Al-cable up to max. Ø 95 mm
Length:	315 mm	435 mm	545 mm	700 mm
Weight:	1,6 kg	1,7 kg	2,9 kg	4,9 kg
In case of different cutting material, please contact the manufacturer				
Surface-grinded blades made up of high-coated steel				
Blades releasable at any point during cutting				
Easy cutting due to the combination of ratchet transmission and long handholds				
All parts replaceable				



#### Ratchet two handed cable cutter

Description:	SK60
Order no.:	80-190
Capacity:	Cu-Al-cable up to max. Ø 60 mm
Length:	620 mm
Weight:	4,4 kg

In case of different cutting material, please contact the manufacturer

Surface-grinded blades made up of high-coated steel

Blades releasable at any point during cutting

Easy cutting due to the combination of ratchet transmission and long handholds

Open jaws are especially suitable for works in the ditch or in a hole in the ground

The blade returns to its starting position by spring return

All parts replaceable



#### Ratchet two handed cable cutter switching automatically from leverage to ratchet transmission

Description:	ER80
Order no.:	80-151
Capacity:	Cu-Al-cable up to max. Ø 80 mm Cu-cable max. 700 mm <sup>2</sup> Al-cable max. 850 mm <sup>2</sup>

Length: 900 mm

Weight: 5,3 kg

In case of different cutting material, please contact the manufacturer

Surface-grinded blades made up of high-coated steel

The cables can be separated quickly by switching automatically from leverage to ratchet transmission

Blades releasable at any point during cutting

Sickle-shaped, rounded blades assure precise cutting

All parts replaceable





NEW



NEW



#### Replaceable cable cutting units

Description:	AF 35C	AS 55C
Order no.:	80-349	80-346
Capacity:	Cu-Al-cable up to max. Ø 35 mm	Cu-Al-cable up to max. Ø 55 mm
Dimensions:	Length: 320 mm Width: 160 mm Height: 160 mm	Length: 285 mm Width: 180 mm Height: 160 mm
	Open jaws for faster operation and greater access to restricted spaces	-
	The blade returns to its starting position by spring return	-
Weight incl. Cordless drill/driver and battery: approx. 2,5 kg		
Power unit: Bosch Cordless drill/driver GSR 12V-35FC Professional (not included in the delivery!)		
In case of different cutting material, please contact the manufacturer		
Cutting unit can be rotated 360°		
Blades releasable at any point during cutting		
Made in Germany		
Accessories see page 15		



**Bosch Handle**

Order no.: 00-031.43 (Bosch Order no.: 1602025024)  
Thread: M10

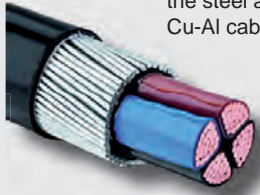


**Bosch Cordless drill/driver GSR 12V-35FC Professional with accessories**

Order no.:	00-109.39 (Bosch Order no.: 0 601 9H3 000)	00-109.40 (Bosch Order no.: 0 601 9H3 001)
Consists of:	<ul style="list-style-type: none"> <li>- 2x Battery GBA 12V 3.0Ah (1 600 A00 X79)</li> <li>- L-BOXX 102 (1 600 A01 2FZ)</li> <li>- Drill chuck adapter GFA 12-B (1 600 A00 F5H)</li> <li>- Bit holder adapter GFA 12-X (1 600 A00 F5J)</li> <li>- Battery charger GAL 12V-40 Professional (1 600 A01 9R3)</li> <li>- Angle adapter GFA 12-W Professional (1 600 A00 F5K)</li> <li>- Off-set angle adapter GFA 12-E (1 600 A00 F5L)</li> </ul>	<ul style="list-style-type: none"> <li>- 2x Battery GBA 12V 3.0Ah (1 600 A00 X79)</li> <li>- L-BOXX 102 (1 600 A01 2FZ)</li> <li>- Drill chuck adapter GFA 12-B (1 600 A00 F5H)</li> <li>- Battery charger GAL 12V-40 Professional (1 600 A01 9R3)</li> </ul>



possible execution of  
the steel armoured  
Cu-Al cable



#### Ratchet two handed cable cutter

Description: SCARZ 45

Order no.: 80-043

Capacity: Steel-armoured Cu-Al-cable up to max. Ø 45 mm

Length: 435 mm

Weight: 1,8 kg

In case of different cutting material, please contact the manufacturer

Surface-grinded blades made up of high-coated steel

Blades releasable at any point during cutting

Easy cutting due to the combination of ratchet transmission and long handholds

All parts replaceable



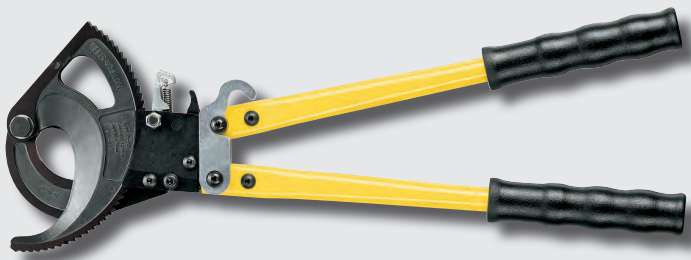


Stationary ratchet cable cutter

Description:	SR52	SER80
Order no.:	80-051	80-165
Capacity:	Cu-Al-cable up to max. Ø 52 mm Cu-cable max. 450 mm <sup>2</sup> Al-cable max. 500 mm <sup>2</sup>	Cu-Al-cable up to max. Ø 80 mm Cu-cable max. 700 mm <sup>2</sup> Al-cable max. 850 mm <sup>2</sup>
Dimensions:	width 330 mm, high 190 mm, depth 115 mm, length 690 mm	width 320 mm, height 290 mm, depth 100 mm, length 950 mm
Weight:	8,3 kg	8,9 kg
In case of different cutting material, please contact the manufacturer		
	The ratchet transmission guarantees a single handling and little effort for the user	The cables can be separated quickly by switching automatically from leverage to ratchet transmission
Blades releasable at any point during cutting		
Ideally suited for workmanship and as cutting tool for cable spool machines		
All parts replaceable		



Ratchet single handed cable cutters		
Description:	EC38	EC55
Order no.:	80-112	80-111
Capacity:	Cu-Al-cable up to max. Ø 38 mm Cu-cable max. 300 mm <sup>2</sup> Al-cable max. 350 mm <sup>2</sup>	Cu-Al-cable up to max. Ø 55 mm Cu-cable max. 450 mm <sup>2</sup> Al-cable max. 500 mm <sup>2</sup>
Length:	275 mm	285 mm
Weight:	0,8 kg	0,9 kg
In case of different cutting material, please contact the manufacturer		
Surface-grinded blades made up of high-coated steel		
Blades releasable at any point during cutting		
All parts replaceable		



Ratchet two handed cable cutters		
Description:	HC55	HC92
Order no.:	80-900	80-903
Capacity:	Cu-Al-cable up to max. Ø 55 mm Cu-cable max. 450 mm <sup>2</sup> Al-cable max. 500 mm <sup>2</sup>	Cu-Al-cable up to max. Ø 92 mm Cu-cable max. 850 mm <sup>2</sup> Al-cable max. 1000 mm <sup>2</sup>
Length:	425 mm	635 mm
Weight:	1,3 kg	3,9 kg
In case of different cutting material, please contact the manufacturer		
Surface-grinded blades made up of high-coated steel		
Blades releasable at any point during cutting		
Easy cutting due to the combination of ratchet transmission and long handholds		
All parts replaceable		



Hydraulic cable cutters

Description:	HS3 6 D CU	HS3 6 RH CU
Order no.:	60-138	60-140
Capacity:	Cu-Al-cable up to max. Ø 60 mm or 570 mm <sup>2</sup>	
Length:	420 mm	410 mm
Weight:	4,6 kg	5,1 kg
Return:	spring return	hydraulic
Compressive force:	56 kN at 450 bar	
Max. working pressure:	450 bar	
Required oil volume:	59 cm <sup>3</sup>	62 cm <sup>3</sup>
Connection:	G 1/2 Female thread	P G 1/2 Female thread R M16x1,5 External thread with 24° inner cone

In case of different cutting material, please contact the manufacturer

Pressure of the jaws is relative to the cutting power, so the jaws do not get jammed

Open jaws for instant operation

Can be connected to following pumps:	Accessories:	Can be connected to following pumps:	Accessories:
Foot pump HFP12 (50-187)	3,5 m Hose package (50-276)	Motor pump HMP2 WE RH (50-106)	4,0 m Hose package with hand switch (50-710)
Motor pump HMP1 (50-186)	4,0 m Hose package with hand switch (50-706)	Motor pump HMP2 DE RH (50-104)	or
Battery pump AP3 (50-185)	or	Motor pump HMP3 DE RH (50-057)	4,0 m Hose package with foot switch (50-718)
Battery pump AP4 (50-189)	4,0 m Hose package with foot switch (50-707)	Motor pump HMP3 DE RH D (50-136)	

Note: the motor pump HMP1 and HMP2 as well as the battery pumps AP3 and AP4 are not designed for continuous operation

Other lengths of hydraulic hose are available on request



Hydraulic cable cutters				
Description:	HS4 D CU		HS4 RH CU	
Order no.:	60-135		60-137	
Capacity:	Cu-Al-cable up to max. Ø 100 mm or 1000 mm <sup>2</sup>			
Length:	680 mm		620 mm	
Weight:	17,5 kg		16,0 kg	
Return:	spring return		hydraulic	
Compressive force:	127 kN at 450 bar			
Max. working pressure:	450 bar		450 bar	Also available as a 700 bar variant on request
Required oil volume:	250 cm <sup>3</sup>			
Connection:	G 1/2 Female thread		P G 1/2 Female thread	R M16x1,5 External thread with 24° inner cone
In case of different cutting material, please contact the manufacturer				
Pressure of the jaws is relative to the cutting power, so the jaws do not get jammed				
Open jaws for instant operation				
	Can be connected to following pumps:	Accessories:	Can be connected to following pumps:	Accessories:
	Motor pump HMP2 WE (50-101)	4,0 m Hose package with hand switch (50-706)	Motor pump HMP2 WE RH (50-106)	4,0 m Hose package with hand switch (50-710)
	Motor pump HMP2 DE (50-102)	or	Motor pump HMP2 DE RH (50-104)	or
	Motor pump HMP3 DE (50-056)	4,0 m Hose package with foot switch (50-707)	Motor pump HMP3 DE RH (50-057)	4,0 m Hose package with foot switch (50-718)
	Motor pump HMP3 DE D (50-135)		Motor pump HMP3 DE RH D (50-136)	
	Battery pump AP4 (50-189)			
Note: the motor pump HMP2 and the battery pump AP4 are not designed for continuous operation				
Other lengths of hydraulic hose are available on request				

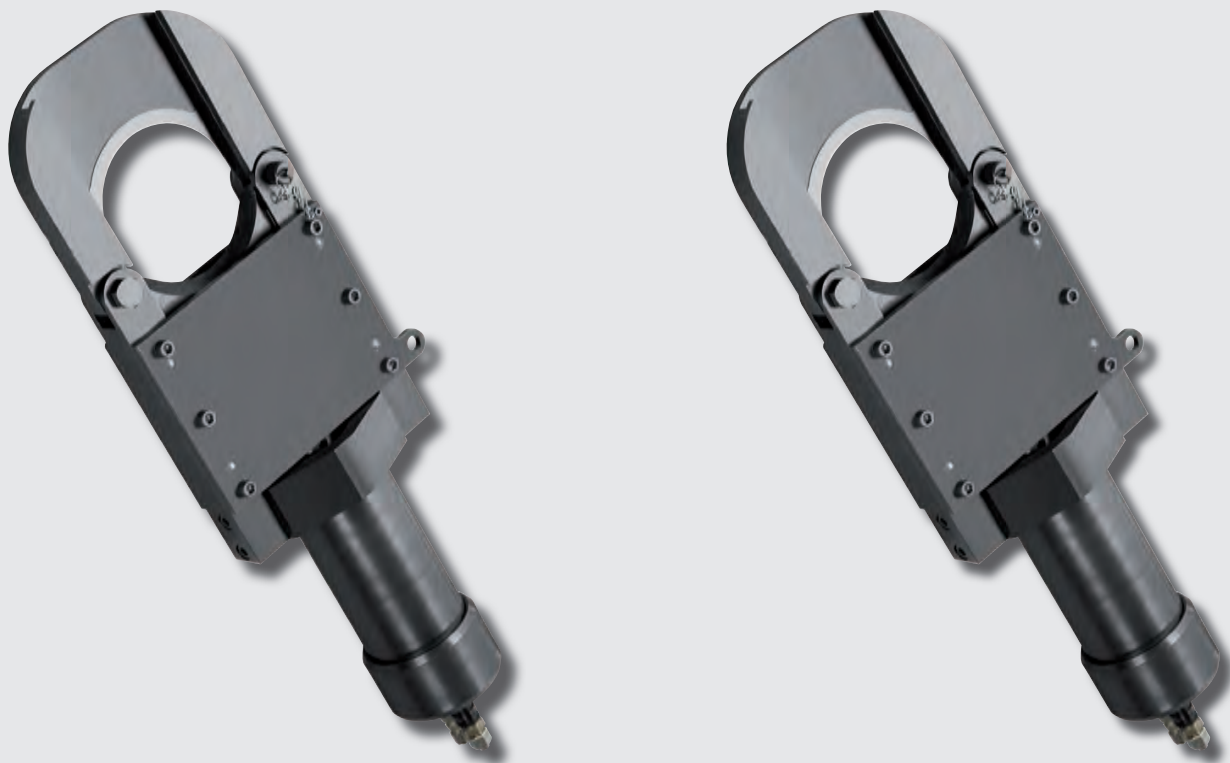




Hydraulic cable cutters				
Description:	HS5 D CU		HS5 RH CU	
Order no.:	60-046		60-084	
Capacity:	Cu-Al-cable up to max. Ø 130 mm or 2000 mm <sup>2</sup>			
Length:	750 mm		750 mm	
Weight:	30,0 kg		29,0 kg	
Return:	spring return		hydraulic	
Compressive force:	226 kN at 450 bar			
Max. working pressure:	450 bar		450 bar Also available as a 700 bar variant on request	
Required oil volume:	530 cm <sup>3</sup>			
Connection:	G 1/2 Female thread		P G 1/2 Female thread R M16x1,5 External thread with 24° inner cone	
In case of different cutting material, please contact the manufacturer				
Pressure of the jaws is relative to the cutting power, so the jaws do not get jammed				
Open jaws for instant operation				
	Can be connected to following pumps:	Accessories:	Can be connected to following pumps:	Accessories:
	Motor pump HMP2 WE (50-101) Motor pump HMP2 DE (50-102) Motor pump HMP3 DE (50-056) Motor pump HMP3 DE D (50-135) Battery pump AP4 (50-189)	4,0 m Hose package with hand switch (50-706) or 4,0 m Hose package with foot switch (50-707)	Motor pump HMP2 WE RH (50-106) Motor pump HMP2 DE RH (50-104) Motor pump HMP3 DE RH (50-057) Motor pump HMP3 DE RH D (50-136)	4,0 m Hose package with hand switch (50-710) or 4,0 m Hose package with foot switch (50-718)
Note: the motor pump HMP2 is not designed for continuous operation				
Other lengths of hydraulic hose are available on request				



Hydraulic cable cutters				
Description:	KB10/65 RH		KB20/100 RH	
Order no.:	60-127		60-125	
Capacity:	Cu-Al-cable up to max. Ø 65 mm		Cu-Al-cable up to max. Ø 100 mm	
Length:	450 mm		610 mm	
Weight:	16,0 kg		32,0 kg	
Return:	hydraulic			
Compressive force:	106 kN at 450 bar		226 kN at 450 bar	
Max. working pressure:	450 bar Also available as a 700 bar variant on request			
Required oil volume:	200 cm <sup>3</sup>		650 cm <sup>3</sup>	
Connection:	P G 1/2 Female thread R M16x1,5 External thread with 24° inner cone			
In case of different cutting material, please contact the manufacturer				
The guillotine-section guarantees a very neat cut edge				
	Can be connected to following pumps:	Accessories:	Can be connected to following pumps:	Accessories:
	Motor pump HMP2 WE RH (50-106) Motor pump HMP2 DE RH (50-104)	4,0 m Hose package with hand switch (50-710) or 4,0 m Hose package with foot switch (50-718)	Motor pump HMP2 WE RH (50-106) Motor pump HMP2 DE RH (50-104) Motor pump HMP3 DE RH (50-057) Motor pump HMP3 DE RH D (50-136)	4,0 m Hose package with hand switch (50-710) or 4,0 m Hose package with foot switch (50-718)
Note: the motor pump HMP2 is not designed for continuous operation				
Other lengths of hydraulic hose are available on request				



Hydraulic cable cutters		
Description:	KB30/160 RH	KB30/200 RH
Order no.:	60-020	60-146
Capacity:	Cu-Al-cable up to max. Ø 160 mm	Cu-Al-cable up to max. Ø 200 mm
Length:	950 mm	1020 mm
Weight:	68,0 kg	95,0 kg
Return:	hydraulic	
Compressive force:	282 kN at 420 bar	
Max. working pressure:	420 bar Also available as a 700 bar variant on request	
Required oil volume:	1600 cm <sup>3</sup>	1800 cm <sup>3</sup>
Connection:	P G 1/2 Female thread R M16x1,5 External thread with 24° inner cone	
In case of different cutting material, please contact the manufacturer		
The guillotine-section guarantees a very neat cut edge		
Can be connected to following pumps:		Accessories:
Motor pump HMP3 DE (50-056)		4,0 m Hose package with hand switch (50-710)
Motor pump HMP3 DE D (50-135)		or
		4,0 m Hose package with foot switch (50-718)
Other lengths of hydraulic hose are available on request		



Selection table wire rope cutters

25

Leverage wire rope cutters

26



Ratchet wire rope cutters

27 - 29

Ratchet cutters ACSR

30



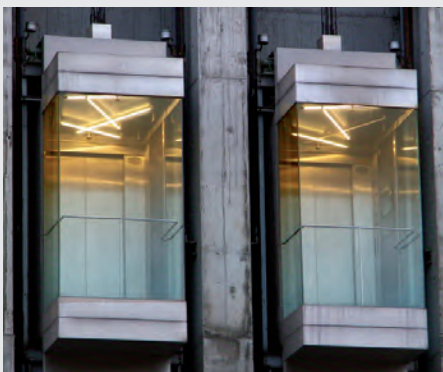
Cordless wire rope cutting units  
with accessories

**NEW**

31

Ratchet flat belt cutter

32



Hydraulic wire rope cutters  
with accessories

33 - 36

Hydraulic flat belt cutters

37





Selection table wire rope cutters				
Cutting material flex. wire ropes up to	further cutting material	Cutting tool	Order no.	Page
Ø 6 mm	Ø 8 mm ( $\leq 750$ N/mm <sup>2</sup> ), Ø 10 mm ( $\leq 220$ N/mm <sup>2</sup> )	ES1	80-416	26
Ø 10 mm	Stainless and high compressed wire ropes Ø 8 mm	KS10	80-153	27
	Ø 11 mm ( $\leq 750$ N/mm <sup>2</sup> ), Ø 12 mm ( $\leq 220$ N/mm <sup>2</sup> )	ES2	80-414	26
	Cu-Al Ø 23 mm with traction rope Ø 10 mm	SCS 10/23	80-042	27
Ø 13 mm	Stainless and high compressed wire ropes Ø 10 mm	KS13	80-156	27
	Stainless and high compressed wire ropes Ø 10 mm	SCS13	80-061	28
		AS13 S AF13 S	80-348 80-661	31 31
Ø 14 mm	Ø 16 mm ( $\leq 750$ N/mm <sup>2</sup> ), Ø 18 mm ( $\leq 220$ N/mm <sup>2</sup> )	ES3	80-428	26
Ø 18 mm	Stainless and high compressed wire ropes Ø 15 mm	SCS18	80-059	28
		KB 5/26 Kompact KB 5/26	60-155 60-123	35 35
Ø 20 mm	Stainless and high compressed wire ropes Ø 16 mm	SCSZ20	80-068	29
	ACSR-cable Ø 20 mm	SCAZ20	80-048	30
		HS3 6 D Wire rope HS3 6 RH Wire rope	60-139 60-141	33 33
Ø 28 mm	Steel-Al-cable Ø 38 mm Steel-Al-cable Ø 38 mm	HS4 D Wire rope	60-134	34
		HS4 RH Wire rope	60-136	34
Ø 30 mm	Stainless and high compressed wire ropes Ø 25 mm	SCSZ30	80-065	29
	ACSR-cable Ø 30 mm	SCAZ30	80-049	30
	Hoses with wire mesh	EHS30	80-421	26
Ø 32 mm		KB 10/40 RH	60-191	36
Ø 38 mm		KB 20/50 RH	60-181	36
50 mm Width	Polymer flat belts with integrated wire ropes up to max. 3 mm height and 50 mm width	SCP50	80-019	32
60 mm Width	Polymer flat belts with integrated wire ropes up to max. 3 mm height and 60 mm width	HCP60	60-151	37
			60-192	37

The hydraulic wire rope cutters described on the following pages only represent an overview with the general properties. Depending on the application, the hydraulic wire rope cutters can be operated with our foot, motor and battery pumps. An adaption to individual applications is generally possible.

We would be glad to provide you with the optimal combination for your application.



Leverage two handed wire rope cutters				
Description:	ES1	ES2	ES3	EHS30
Order no.:	80-416	80-414	80-428	80-421
Capacity:	Flexible wire ropes up to max. Ø 6 mm (≤ 1800 N/mm <sup>2</sup> ), up to max. Ø 8 mm (≤ 750 N/mm <sup>2</sup> ), up to max. Ø 10 mm (≤ 220 N/mm <sup>2</sup> )	Flexible wire ropes up to max. Ø 10 mm (≤ 1800 N/mm <sup>2</sup> ), up to max. Ø 11 mm (≤ 750 N/mm <sup>2</sup> ), up to max. Ø 12 mm (≤ 220 N/mm <sup>2</sup> )	Flexible wire ropes up to max. Ø 14 mm (≤ 1800 N/mm <sup>2</sup> ), up to max. Ø 16 mm (≤ 750 N/mm <sup>2</sup> ), up to max. Ø 18 mm (≤ 220 N/mm <sup>2</sup> )	Plastic cables and hoses with wire mesh up to max. Ø 30 mm
Length:	345 mm	490 mm	720 mm	730 mm
Weight:	0,7 kg	1,3 kg	2,7 kg	2,3 kg
In case of different cutting material, please contact the manufacturer				
Surface-grinded blades made up of high-coated steel				
Sickle-shaped, rounded blades assure precise cutting				
Top stability and minimal dead weight				
All parts replaceable				
Stationary versions are also available on request				



Rigging cutter incl. supporting loop

Replacement supporting loop for rigging cutter

Supporting loop for rigging cutter

Order no.: 80-133.01

Ratchet single handed wire rope cutters

Description:	KS10	KS13
Order no.:	80-153 without supporting loop 80-186 incl. supporting loop	80-156 without supporting loop 80-185 incl. supporting loop
Capacity:	Flexible wire ropes up to max. Ø 10 mm, Stainless and high compressed wire ropes up to max. Ø 8 mm	Flexible wire ropes up to max. Ø 13 mm, Stainless and high compressed wire ropes up to max. Ø 10 mm
Length:	270 mm	285 mm
Weight:	0,9 kg	1,0 kg

In case of different cutting material, please contact the manufacturer

Surface-grinded blades made up of high-coated steel

Blades releasable at any point during cutting

The blade returns to its starting position by spring return

All parts replaceable



Ratchet single handed wire rope cutter

Description:	SCS10/23
Order no.:	80-042
Capacity:	Combined Cu-Al-cable Ø 23 mm with traction rope Ø 10 mm
Length:	240 mm
Weight:	0,8 kg

In case of different cutting material, please contact the manufacturer

Surface-grinded blades made up of high-coated steel

Blades releasable at any point during cutting

Fatigue-proof cutting as a result of ergonomic form and soft material of handles

All parts replaceable



Rigging cutter incl. supporting loop

Replacement supporting loop for rigging cutter

Supporting loop for rigging cutter

Order no.: 80-044.01

Ratchet single handed wire rope cutters		
Description:	SCS13	SCS18
Order no.:	80-061 without supporting loop 80-044 incl. supporting loop	80-059 80-036 Sailing version incl. lanyard
Capacity:	Flexible wire ropes up to max. Ø 13 mm, Stainless and high compressed wire ropes up to max. Ø 10 mm	Flexible wire ropes up to max. Ø 18 mm, Stainless and high compressed wire ropes up to max. Ø 15 mm
Length:	245 mm	315 mm
Weight:	0,9 kg	1,7 kg
In case of different cutting material, please contact the manufacturer		
Surface-grinded blades made up of high-coated steel		
Blades releasable at any point during cutting		
Fatigue-proof cutting as a result of ergonomic form and soft material of handles		
All parts replaceable		



Rigging cutter incl. supporting loop

Replacement supporting loop for rigging cutter

Supporting loop for rigging cutter

Order no.: 80-020.02

Ratchet two handed wire rope cutters

Description:	SCSZ20	SCSZ30
Order no.:	80-068 without supporting loop 80-037 incl. supporting loop	80-065
Capacity:	Flexible wire ropes up to max. Ø 20 mm, Stainless and high compressed wire ropes up to max. Ø 16 mm	Flexible wire ropes up to max. Ø 30 mm, Stainless and high compressed wire ropes up to max. Ø 25 mm
Length:	440 mm	703 mm
Weight:	1,9 kg	5,3 kg

In case of different cutting material, please contact the manufacturer

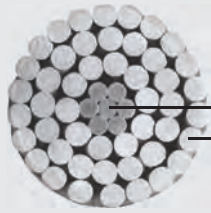
Surface-grinded blades made up of high-coated steel

Blades releasable at any point during cutting

Easy cutting due to the combination of ratchet transmission and long handholds

All parts replaceable





Steelcore  
Conductor

The outer area of these overhead cables consists of light, highly conductive aluminum wires, the core of particularly stretch resistant galvanized steel wire.

(ACSR = Aluminium Conductor Steel Reinforced)



Ratchet two handed cutter for ACSR

Description:	SCAZ20	SCAZ30
Order no.:	80-048	80-049
Capacity:	ACSR-cable up to max. Ø 20 mm	ACSR-cable up to max. Ø 30 mm
Length:	440 mm	703 mm
Weight:	1,9 kg	5,3 kg

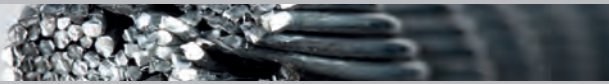
In case of different cutting material, please contact the manufacturer

Surface-grounded blades made up of high-coated steel

Blades releasable at any point during cutting

Easy cutting due to the combination of ratchet transmission and long handholds

All parts replaceable



NEW



NEW



Replaceable wire rope cutting units

Description:	AF 13S	AS 13S
Order no.:	80-661	80-348
Capacity:	Flexible wire ropes up to max. Ø 13 mm, Stainless and high compressed wire ropes up to max. Ø10 mm	
Dimensions:	Length: 300 mm Width: 160 mm Height: 160 mm	Length: 285 mm Width: 180 mm Height: 160 mm
	The blade returns to its starting position by spring return	
Weight incl. Cordless drill/driver and battery:	approx. 2,5 kg	
Power unit:	Bosch Cordless drill/driver GSR 12V-35FC Professional (not included in the delivery!)	
	In case of different cutting material, please contact the manufacturer	
	Cutting unit can be rotated 360°	
	Blades releasable at any point during cutting	
	Made in Germany	
	Accessories see page 15	



Ratchet two handed cutter for flat belts

Description: SCP50

Order no.: 80-019

Capacity: Polymer flat belts with integrated wire ropes up to max. 3 mm height and 50 mm width

Length: 500 mm

Weight: 3,0 kg

In case of different cutting material, please contact the manufacturer

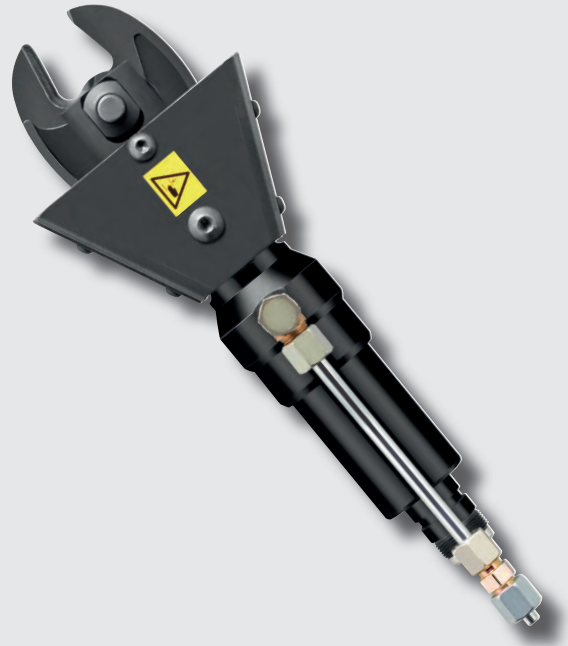
Surface-ground blades made up of high-coated steel

Blades releasable at any point during cutting

Easy cutting due to the combination of ratchet transmission and long handholds

The blade returns to its starting position by spring return

All parts replaceable



Hydraulic wire rope cutters

Description:	HS3 6 D Wire rope	HS3 6 RH Wire rope
Order no.:	60-139	60-141
Capacity:	Flexible wire ropes up to max. Ø 20 mm	
Length:	380 mm	370 mm
Weight:	4,2 kg	4,7 kg
Return:	spring return	hydraulic
Compressive force:	56 kN at 450 bar	
Max. working pressure:	450 bar	
Required oil volume:	58 cm <sup>3</sup>	62 cm <sup>3</sup>
Connection:	G 1/2 Female thread	P G 1/2 Female thread R M16x1,5 External thread with 24° inner cone

In case of different cutting material, please contact the manufacturer

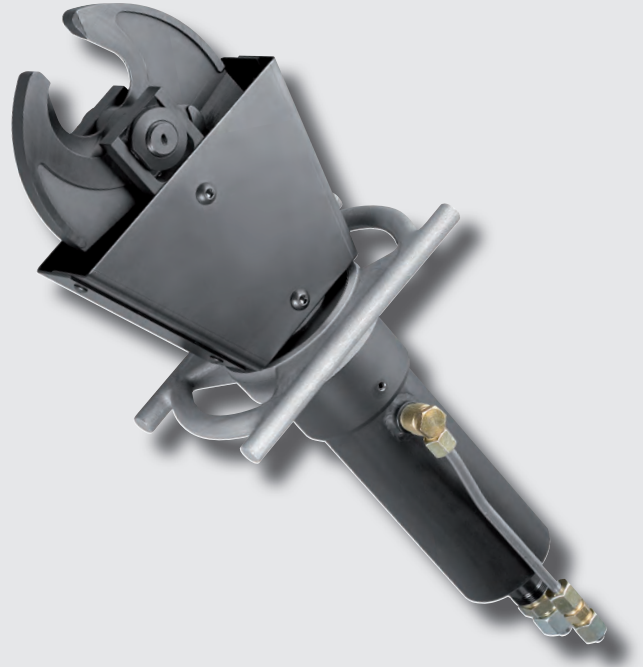
Pressure of the jaws is relative to the cutting power, so the jaws do not get jammed

Open jaws for instant operation

Can be connected to following pumps:	Accessories:	Can be connected to following pumps:	Accessories:
Foot pump HFP12 (50-187)	3,5 m Hose package (50-276)	Motor pump HMP2 WE RH (50-106)	4,0 m Hose package with hand switch (50-710)
Motor pump HMP1 (50-186)	4,0 m Hose package with hand switch (50-706)	Motor pump HMP2 DE RH (50-104)	or
Battery pump AP3 (50-185)	or	Motor pump HMP3 DE RH (50-057)	4,0 m Hose package with foot switch (50-718)
Battery pump AP4 (50-189)	4,0 m Hose package with foot switch (50-707)	Motor pump HMP3 DE RH D (50-136)	

Note: the motor pump HMP1 and HMP2 as well as the battery pumps AP3 and AP4 are not designed for continuous operation

Other lengths of hydraulic hose are available on request



Hydraulic wire rope cutters				
Description:	HS4 D Wire rope		HS4 RH Wire rope	
Order no.:	60-134		60-136	
Capacity:	Fine stranded wire ropes up to max. Ø 28 mm, Steel-Al-cable up to max. Ø 38 mm			
Length:	650 mm		590 mm	
Weight:	17,0 kg		15,5 kg	
Return:	spring return		hydraulic	
Compressive force:	127 kN at 450 bar			
Max. working pressure:	450 bar		450 bar Also available as a 700 bar variant on request	
Required oil volume:	250 cm <sup>3</sup>			
Connection:	G 1/2 Female thread		P G 1/2 Female thread R M16x1,5 External thread with 24° inner cone	
In case of different cutting material, please contact the manufacturer				
Pressure of the jaws is relative to the cutting power, so the jaws do not get jammed				
Open jaws for instant operation				
	Can be connected to following pumps:	Accessories:	Can be connected to following pumps:	Accessories:
	Motor pump HMP2 WE (50-101) Motor pump HMP2 DE (50-102) Motor pump HMP3 DE (50-056) Motor pump HMP3 DE D (50-135) Battery pump AP4 (50-189)	4,0 m Hose package with hand switch (50-706) or 4,0 m Hose package with foot switch (50-707)	Motor pump HMP2 WE RH (50-106) Motor pump HMP2 DE RH (50-104) Motor pump HMP3 DE RH (50-057) Motor pump HMP3 DE RH D (50-136)	4,0 m Hose package with hand switch (50-710) or 4,0 m Hose package with foot switch (50-718)
Note: the motor pump HMP2 and the battery pump AP4 are not designed for continuous operation				
Other lengths of hydraulic hose are available on request				





Hydraulic wire rope cutters		
Description:	KB5/26 for hose connection	KB5/26 kompakt incl. hand pump
Order no.:	60-123	60-155
Capacity:	Flexible wire ropes up to max. Ø 18 mm ( $\leq 1800 \text{ N/mm}^2$ )	
Length:	260 mm	450 mm
Weight:	2,4 kg	3,7 kg
Return:	spring return	Outlet lever
Compressive force:	56 kN at 450 bar	
Max. working pressure:	450 bar	
Required oil volume:	40 cm <sup>3</sup>	-
Connection:	G 1/2 Female thread	incl. hand pump
	-	Robust, handy, universal usable
	-	About 55 applications at full stroke
In case of different cutting material, please contact the manufacturer		
The guillotine-section guarantees a very neat cut edge		
Can be connected to following pumps:	Accessories:	
Foot pump HFP12 (50-187)	3,5 m Hose package (50-276)	
Motor pump HMP1 (50-186) Battery pump AP3 (50-185) Battery pump AP4 (50-189)	4,0 m Hose package with hand switch (50-706) or 4,0 m Hose package with foot switch (50-707)	
Note: the motor pump HMP1 and the battery pumps AP3 and AP4 are not designed for continuous operation	-	
Other lengths of hydraulic hose are available on request	-	



Hydraulic wire rope cutters				
Description:	KB10/40 RH		KB20/50 RH	
Order no.:	60-191		60-181	
Capacity:	Flexible wire ropes up to max. Ø 32 mm ( $\leq 1800$ N/mm <sup>2</sup> )		Flexible wire ropes up to max. Ø 38 mm ( $\leq 1800$ N/mm <sup>2</sup> )	
Length:	450 mm		610 mm	
Weight:	16,0 kg		32,0 kg	
Return:	hydraulic			
Compressive force:	106 kN at 450 bar		226 kN at 450 bar	
Max. working pressure:	450 bar			
Required oil volume:	200 cm <sup>3</sup>		650 cm <sup>3</sup>	
Connection:	P G 1/2 Female thread R M16x1,5 External thread with 24° inner cone			
In case of different cutting material, please contact the manufacturer				
The guillotine-section guarantees a very neat cut edge				
	Can be connected to following pumps:	Accessories:	Can be connected to following pumps:	Accessories:
	Motor pump HMP2 WE RH (50-106) Motor pump HMP2 DE RH (50-104)	4,0 m Hose package with hand switch (50-710) or 4,0 m Hose package with foot switch (50-718)	Motor pump HMP2 WE RH (50-106) Motor pump HMP2 DE RH (50-104) Motor pump HMP3 DE RH (50-057) Motor pump HMP3 DE RH D (50-136)	4,0 m Hose package with hand switch (50-710) or 4,0 m Hose package with foot switch (50-718)
Note: the motor pump HMP2 is not designed for continuous operation				
Other lengths of hydraulic hose are available on request				



Hydraulic flat belt cutter

Description:	HCP60 for hose connection	HCP60 kompakt incl. hand pump
Order no.:	60-192	60-151
Capacity:	Polymer flat belts with integrated wire ropes up to max. 3 mm height and 60 mm width	
Length:	157 mm	386 mm
Weight:	3,0 kg	4,5 kg
Return:	spring return	Outlet lever
Compressive force:	50 kN at 530 bar	
Max. working pressure:	530 bar	
	-	Robust, handy, universal usable
	-	About 21 applications at full stroke

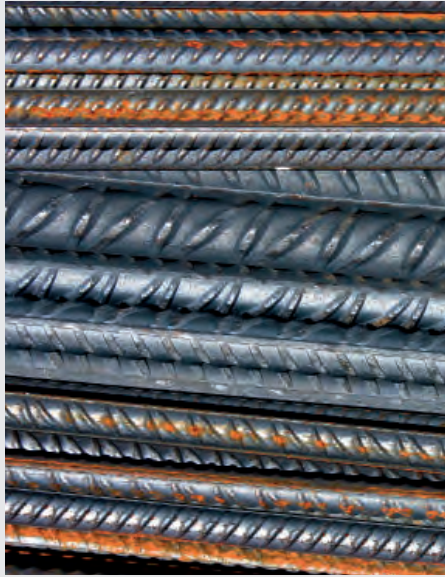
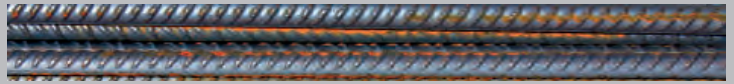
In case of different cutting material, please contact the manufacturer

The guillotine-section guarantees a very neat cut edge

Can be connected to following pumps:	Accessories:
Foot pump HFP12 (50-187)	3,5 m Hose package (50-276)
Motor pump HMP1 (50-186) Battery pump AP3 (50-185) Battery pump AP4 (50-189)	4,0 m Hose package with hand switch (50-706) or 4,0 m Hose package with foot switch (50-707)

Note: the motor pump HMP1 and the battery pumps AP3 and AP4 are not designed for continuous operation

Other lengths of hydraulic hose are available on request



Selection table bolt cutters

39

Leverage bolt cutters

40

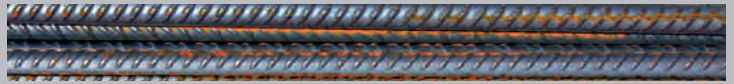
Hydraulic bolt cutter

41

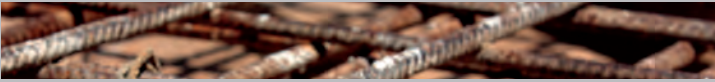


Selection table bolt cutters				
Cutting material bolt 19 HRC	further cutting material	Cutting tool	Order no.	Page
Ø 9 mm	Ø 8 mm / 40 HRC	BSS	80-354	40
	Ø 7 mm / 48 HRC	BSK light	80-355	40
Ø 13 mm	Ø 10 mm / 40 HRC	BSK	80-352	40
	Ø 9 mm / 48 HRC			
Ø 16 mm	Ø 11 mm / 40 HRC	BSG	80-353	40
	Ø 10 mm / 48 HRC	SH16	60-174	41





Leverage Bolt cutters				
Description:	BSS	BSK light	BSK	BSG
Order no.:	80-354	80-355	80-352	80-353
Capacity:	Ø 9 mm / 19 HRC Ø 8 mm / 40 HRC Ø 7 mm / 48 HRC		Ø 13 mm / 19 HRC Ø 10 mm / 40 HRC Ø 9 mm / 48 HRC	Ø 16 mm / 19 HRC Ø 11 mm / 40 HRC Ø 10 mm / 48 HRC
Length:	550 mm	960 mm	960 mm	1000 mm
Weight:	2,4 kg	4,6 kg	6,7 kg	6,9 kg
In case of different cutting material, please contact the manufacturer				
Replaceable blades consisting high-quality hardened special tool steel				
Impact resistant coated and hardened handles				
All parts replaceable				



**Hydraulic bolt cutter with spring return**

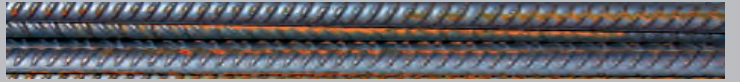
Description:	SH16
Order no.:	60-174
Capacity:	Ø 16 mm / 19 HRC Ø 11 mm / 40 HRC Ø 10 mm / 48 HRC
Length:	650 mm
Weight:	8,6 kg
In case of different cutting material, please contact the manufacturer	
Replaceable blades consisting high-quality hardened special tool steel	
Max. working pressure: 400 bar	
Connection: G 1/2 internal thread	
All parts replaceable	

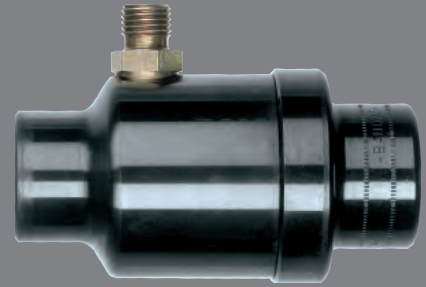
**Connection options with accessories for hydraulic bolt cutter with spring return**

Can be connected to following pumps:	Accessories:
Foot pump HFP12 (50-187)	3,5 m Hose package (50-276)
Motor pump HMP1 (50-186) Battery pump AP3 (50-185) Battery pump AP4 (50-189)	4,0 m Hose package with hand switch (50-706) or 4,0 m Hose package with foot switch (50-707)

Note: the motor pump HMP1 and the battery pumps AP3 and AP4 are not designed for continuous operation

Other lengths of hydraulic hose are available on request





**BAUDAT**  
GmbH & Co. KG

[www.baudat.de](http://www.baudat.de)

Expiring plate punchers  
program

Only while stocks last!



Comparison of the old and new plate punchers program	45
Control options for old and new plate punchers	46 - 47
Selection table rods	48
Ratchet plate punchers	49 - 50
Screw hole punchers	51
Hydraulic plate punchers for steel plate	52
Punching tools for steel plates	53 - 56
Punching tools for stainless steel plates	57

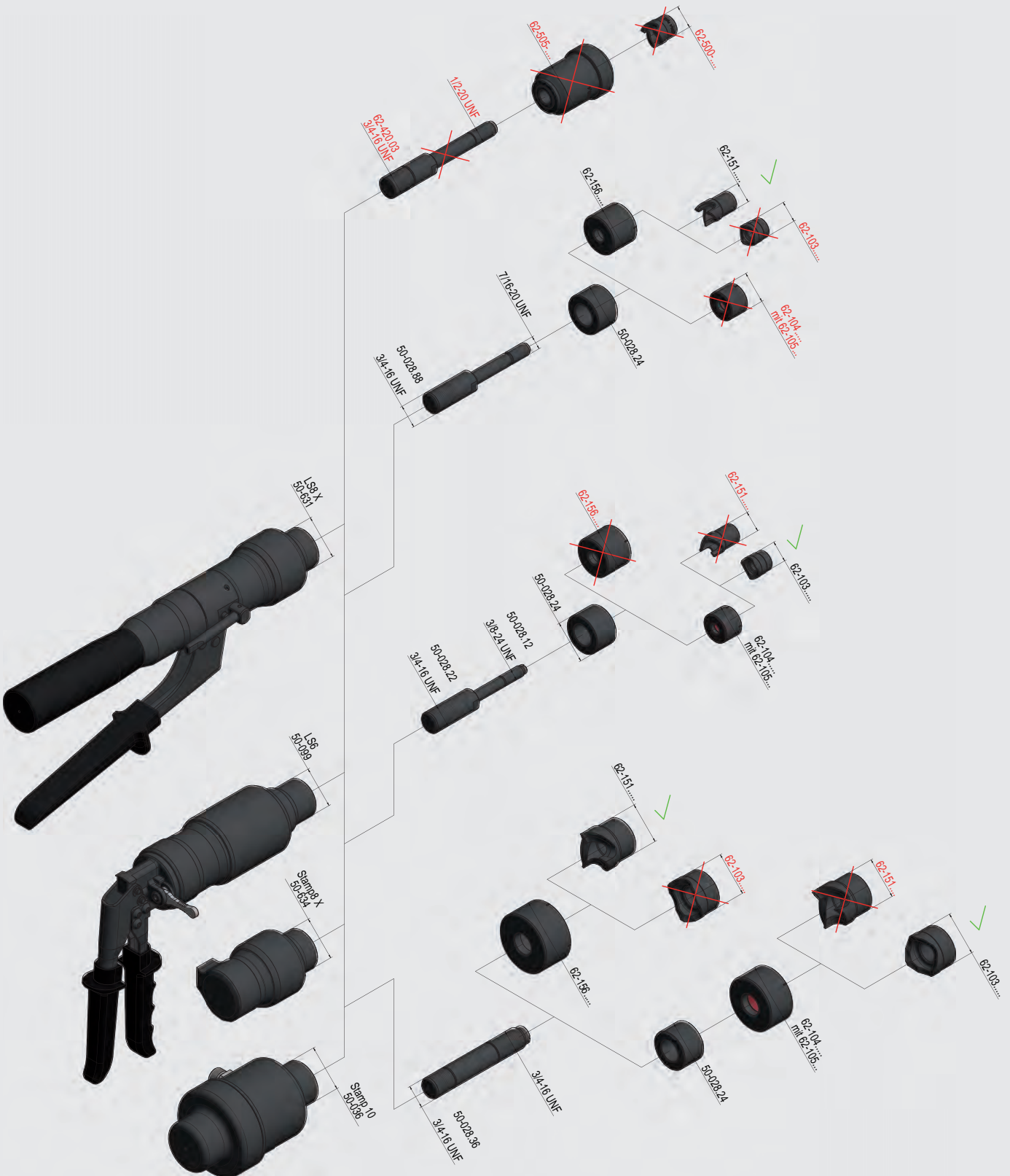


All products from the old plate punchers program only while stocks last!

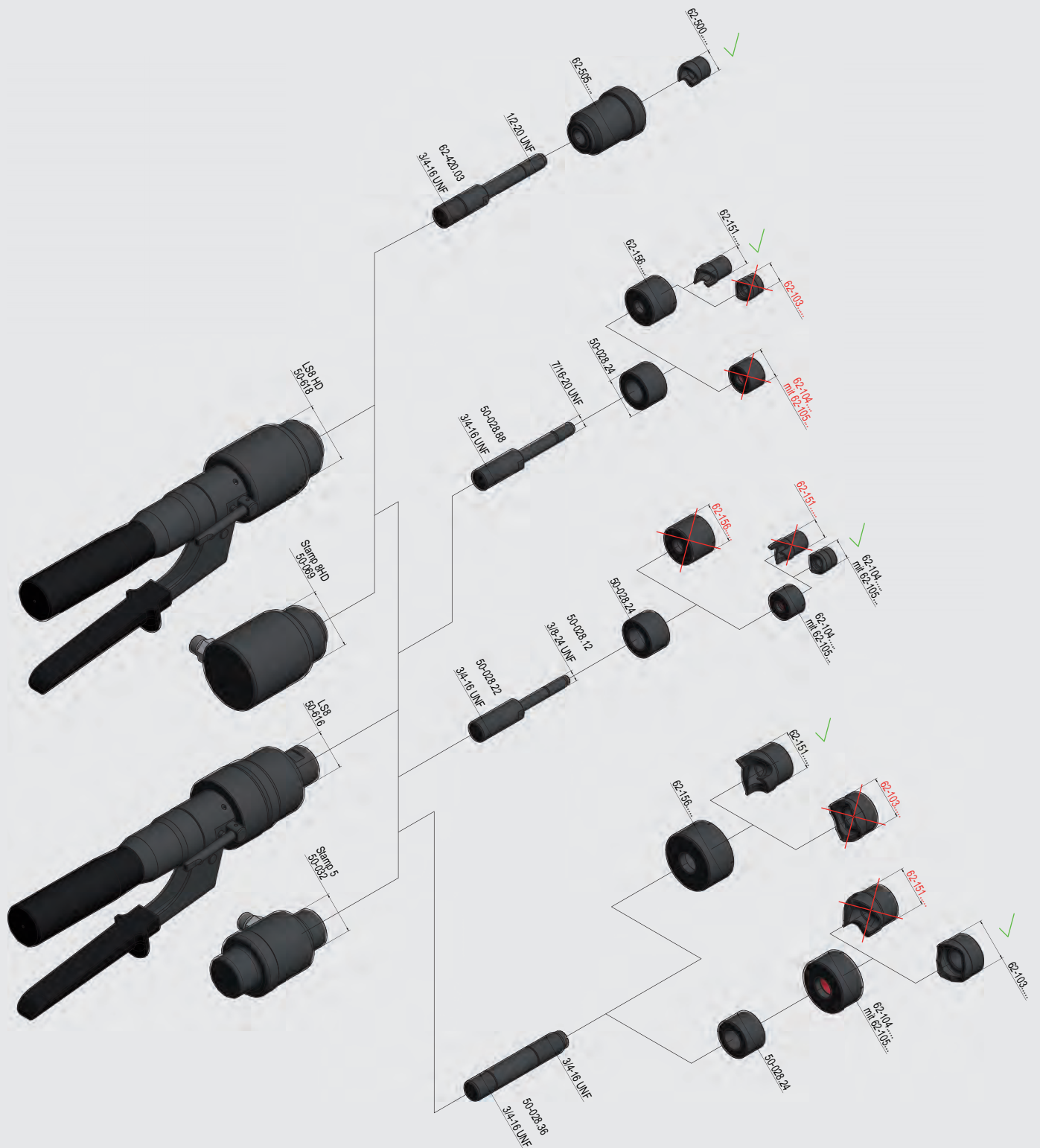
Set / Old plate punchers		Set / New plate punchers see p. 59
50-607 metrical LS6 Punching tool set	becomes	50-637 metrical LS6 Punching tool set
50-606 PG LS6 Punching tool set	becomes	50-638 PG LS6 Punching tool set
50-616 LS8	becomes	50-631 LS8 X
50-608 metrical LS8 Punching tool set	becomes	50-643 metrical LS8 X Punching tool set
50-603 PG LS8 Punching tool set	becomes	50-642 PG LS8 X Punching tool set
50-032 Stamp 5	becomes	50-634 Stamp8 X
50-618 LS8 HD	becomes	50-631 LS8 X
50-611 metrical LS8 HD Punching tool set	becomes	50-643 metrical LS8 X Punching tool set
50-602 PG LS8 HD Punching tool set	becomes	50-642 PG LS8 X Punching tool set
50-069 Stamp8 HD	becomes	50-634 Stamp8 X
62-139 Standard set punching tool metrical	becomes	62-157 Standard set punching tool metrical
62-106 Standard set punching tool PG	becomes	62-158 Standard set punching tool PG
62-501 Standard set punching tool metrical HD	becomes	62-157 Standard set punching tool metrical
62-402 Standard set punching tool PG HD	becomes	62-158 Standard set punching tool PG



Control options with the current and new plate punchers



Control options with the expiring plate punchers





only while stocks last

Rods						
Order no.:	Length	Diameter (mm)	Thread	Pre-drill	Sleeve	Adaption with
<b>round</b>						
50-028.22	73 mm	Ø 9,5 mm	3/8" - 24 UNF	Ø 10,5 mm	50-028.24	LS6, LS8, Stamp5, Stamp10
50-028.45	120 mm	Ø 16,0 mm	M16 x 1,5	Ø 17,0 mm	50-028.48	LS8, Stamp10
50-028.46	111 mm	Ø 12,0 mm	M12 x 1,5	Ø 13,0 mm	50-028.48	LS6, Stamp5
50-028.47	97 mm	Ø 10,0 mm	M10 x 1,0	Ø 11,0 mm	50-028.48	LS6, Stamp5
<b>square + rectangular</b>						
50-028.40	95 mm	Ø 16,0 mm	M12 x 1,5	Ø 17,0 mm	-	LS6, LS8, Stamp5, Stamp10
50-028.50	85 mm	Ø 15,0 mm	M12 x 1,5	Ø 16,0 mm	-	LS6, LS8, Stamp5, Stamp10
50-028.83	130 mm	Ø 22,0 mm	M16 x 1,5	Ø 23,0 mm	-	LS8, Stamp10
<b>round HD</b>						
62-401.01	90 mm	Ø 9,5 mm	3/8" - 24 UNF	Ø 10,5 mm	-	LS8 HD, Stamp8 HD
62-401.02	125 mm	Ø 19,0 mm	3/4" - 16 UNF	Ø 20,0 mm	-	LS8 HD, Stamp8 HD
62-420.03	121 mm	Ø 12,7 mm	1/2" - 20 UNF	Ø 14,0 mm	-	LS8 HD, Stamp8 HD
<b>square HD</b>						
62-401.03	94 mm	Ø 22,0 mm	M16 x 1,5	Ø 23,0 mm	-	LS8 HD, Stamp8 HD

only while stocks last



Ratchet flute puncher

Description:	KNZ
Order no.:	80-805
Punching capacity:	Steel plates up to max. 2,5 mm
Length:	330 mm
Weight:	1,0 kg
Width of flutes 3,2 mm and 4,8 mm	
Punches accurate slugs nearly free of burs	
Usable for building and maintaining control boxes	
Easy single handed using with small effort	
The blade returns to its starting position by spring return	
All parts replaceable	





only while stocks last



Ratchet hole puncher	
Description:	LZ2000
Order no.:	80-806
Punching capacity:	Steel plates up to max. 2,5 mm
Length:	300 mm
Weight:	1,4 kg
Max. distance from the border to the hole 50 mm	
Punches accurate slugs nearly free of burs	
Ideally suited for quick punching of non created plates	
Easy single handed using with small effort	
The blade returns to its starting position by spring return	
All parts replaceable	

Plungers and matrix for LZ2000 round		
Size (mm)	Plungers	Matrix
Ø 4,2	62-110.04	62-111.04
Ø 5	62-110.05	62-111.05
Ø 6	62-110.06	62-111.06
Ø 7	62-110.07	62-111.07
Ø 9	62-110.09	62-111.09
Ø 10,5	62-110.10	62-111.10
Ø 11	62-110.11	62-111.11
Ø 13	62-110.13	62-111.13

Plungers and matrix for LZ2000 rectangular		
Size (mm)	Plungers	Matrix
5 x 10	62-110.105	62-111.105
5 x 13	62-110.135	62-111.135
6 x 13	62-110.136	62-111.136
7 x 13	62-110.137	62-111.137

Screw hole punchers



Order no.	Length	Diameter	Thread	Pre-drill	Wrench size	Capacity steel plate
62-138	70 mm	Ø 9,5 mm	3/8" - 24 UNF	Ø 10,5 mm	14	2 mm, max. Ø 33 mm
62-140	96 mm	Ø 19,0 mm	3/4" - 16 UNF	Ø 20,0 mm	27	2 mm, max. Ø 80 mm



only while stocks last



Hydraulic plate puncher for steel plates	
Description:	LS8
Order no.:	50-616
Punching capacity:	max. 3 mm Steel plates: up to Ø 110,0 mm, up to 110 x 110 mm, up to 86 x 115 mm
Length:	308 mm
Weight:	2,4 kg
Punching power:	approx. 80 kN
Max. working pressure:	450 bar
Ideally suited for quick and frontal punching of control boards	
Easy single handed using with small effort	
Punches accurate slugs nearly free of burs	
All parts replaceable	
Punching tools starting page 53	



Punching tool set LS8		
Description:	Punching tool set in the case metrical	Punching tool set in the case PG
Order no.:	50-608	50-603
Weight:	5,0 kg	4,5 kg
Dimensions:	380 x 280 x 70 mm	
Consists of:	<ul style="list-style-type: none"> <li>- 1 LS8</li> <li>- 5 Cutting edges and matrix:  <ul style="list-style-type: none"> <li>Ø 16,5 mm (M16),    Ø 20,5 mm (M20)</li> <li>Ø 25,5 mm (M25),    Ø 32,5 mm (M32)</li> <li>Ø 40,5 mm (M40)</li> </ul> </li> <li>- 4 Elastic inserts (for throwing-off punching waste)</li> <li>- 2 Rods</li> <li>- 1 Sleeve</li> <li>- 1 Adapter</li> <li>- 1 plastic case with insert + cutting paste</li> </ul>	<ul style="list-style-type: none"> <li>- 1 LS8</li> <li>- 6 Cutting edges and matrix:  <ul style="list-style-type: none"> <li>Ø 15,2 mm (PG9),    Ø 18,6 mm (PG11)</li> <li>Ø 20,4 mm (PG13),    Ø 22,5 mm (PG16)</li> <li>Ø 28,3 mm (PG21),    Ø 30,5 mm</li> </ul> </li> <li>- 5 Elastic inserts (for throwing-off punching waste)</li> <li>- 1 Adapter</li> <li>- 1 Rod</li> <li>- 1 Sleeve</li> <li>- 1 plastic case with insert + cutting paste</li> </ul>
Replacement case:	70-047	
Punching tools starting page 53		

only while stocks last

Punching tools round



Size (mm)	Cutting edge	Elastic insert	Matrix	Sleeve	Rod	Adapter	
Ø 15,2 (PG 9)	62-103.0152		62-104.0152	50-028.24	50-028.22	50-028.12	
Ø 16,0	62-103.0160		62-104.0160	↓	↓	↓	
Ø 16,1	62-103.0161		62-104.0161				
Ø 16,2	62-103.0162		62-104.0162				
Ø 16,5 (M 16)	62-103.0165		62-104.0165				
Ø 16,8	62-103.0168		62-104.0168				
Ø 16,9	62-103.0169		62-104.0169				
Ø 18,6 (PG 11)	62-103.0186	62-105.01	62-104.0186				
Ø 19,0	62-103.0190	↓	62-104.0190				
Ø 19,05 (3/4 ")	62-135.0190		62-136.0190				
Ø 19,5	62-103.0195		62-104.0195				
Ø 20,0	62-103.0200		62-104.0200				
Ø 20,4 (PG 13)	62-103.0204		62-104.0204				
Ø 20,5 (M 20)	62-103.0205		62-104.0205				
Ø 21,0	62-103.0210		62-104.0210				
Ø 21,5	62-103.0215		62-105.02				62-104.0215
Ø 22,0	62-103.0220		↓				62-104.0220
Ø 22,5 (PG 16)	62-103.0225						62-104.0225
Ø 24,0	62-103.0240	62-104.0240					
Ø 25,0	62-103.0250	62-104.0250					
Ø 25,4 (1 ")	62-135.0254	62-136.0254					
Ø 25,5 (M 25)	62-103.0255	62-104.0255					
Ø 26,0	62-103.0260	62-104.0260					
Ø 26,5	62-103.0265	62-104.0265					
Ø 27,0	62-103.0270	62-104.0270					
Ø 27,3	62-103.0273	62-105.04		62-104.0273			
Ø 28,0	62-103.0280	↓	62-104.0280				
Ø 28,3 (PG 21)	62-103.0283		62-104.0283				
Ø 29,0	62-103.0290		62-104.0290				
Ø 30,0	62-103.0300		62-104.0300				
Ø 30,1	62-103.0301		62-104.0301				
Ø 30,5	62-103.0305		62-104.0305				
Ø 31,7	62-103.0317		62-104.0317				
Ø 32,0	62-103.0320		62-104.0320				
Ø 32,5 (M 32)	62-103.0325		62-104.0325				
Ø 33,0	62-103.0330		62-104.0330				
Ø 35,0	62-103.0350	62-105.06	62-104.0350	50-028.36			
Ø 36,5	62-103.0365	↓	62-104.0365				
Ø 37,0 (PG 29)	62-103.0370		62-104.0370				
Ø 38,1 (1 1/2 ")	62-135.0381		62-136.0381				
Ø 40,0	62-103.0400		62-104.0400				
Ø 40,5 (M 40)	62-103.0405		62-104.0405				



only while stocks last

Punching tools round

Size (mm)	Cutting edge	Elastic insert	Matrix	Sleeve	Rod	Adapter
Ø 40,7	62-103.0407	62-105.06	62-104.0407	50-028.24	50-028.36	
Ø 42,0	62-103.0420	↓	62-104.0420	↓	↓	
Ø 43,2	62-103.0432		62-104.0432			
Ø 43,5	62-103.0435		62-104.0435			
Ø 43,8	62-103.0438		62-104.0438			
Ø 44,0	62-103.0440		62-104.0440			
Ø 45,0	62-103.0450		62-104.0450			
Ø 45,5	62-103.0455		62-105.08			62-104.0455
Ø 48,0	62-103.0480		62-104.0480			
Ø 50,0	62-103.0500		62-104.0500			
Ø 50,5 (M 50)	62-103.0505		62-104.0505			
Ø 51,0	62-103.0510	62-104.0510				
Ø 52,0	62-103.0520	62-104.0520				
Ø 54,0 (PG 42)	62-103.0540	62-104.0540				
Ø 55,0	62-103.0550	62-105.10	62-104.0550	↓	↓	
Ø 56,5	62-103.0565	62-104.0565				
Ø 58,0	62-103.0580	62-104.0580				
Ø 59,0	62-103.0590	62-104.0590				
Ø 59,3 (PG 48)	62-103.0593	62-104.0593	50-028.24			
Ø 60,0	62-103.0600	62-104.0600				
Ø 60,5	62-103.0605	62-104.0605				
Ø 63,0	62-103.0630	62-104.0630				
Ø 63,5 (M 63)	62-103.0635	62-104.0635	50-028.24			
Ø 65,0	62-103.0650	62-104.0650				
Ø 66,0	62-103.0660	62-104.0660				
Ø 67,0	62-103.0670	62-104.0670				
Ø 68,0	62-103.0680	62-104.0680				
Ø 70,0	62-103.0700	62-104.0700				
Ø 72,0	62-103.0720	62-104.0720				
Ø 73,0	62-103.0730	62-104.0730				
Ø 75,0	62-103.0750	62-104.0750				
Ø 80,0	62-103.0800	62-104.0800				
Ø 82,0	62-103.0820	62-104.0820				
Ø 85,0	62-103.0850	62-104.0850				
Ø 86,0	62-103.0860	62-104.0860				
Ø 90,0	62-103.0900	62-104.0900				
Ø 92,0	62-103.0920	62-104.0920				
Ø 110,0	62-103.1100	62-104.1100				
Ø 120,0	62-103.1200	62-104.1200				



only while stocks last

Punching tools square



Size (mm)	Knurled nut	Cutting edge	Matrix	Rod
20 x 20	50-028.42	62-115.0200	62-116.0200	50-028.50
21 x 21	↓	62-115.0210	62-116.0210	↓
22 x 22		62-115.0220	62-116.0220	
26 x 26		62-115.0260	62-116.0260	
32,5 x 32,5	50-028.71	62-115.0325	62-116.0325	62-401.03
34 x 34	↓	62-115.0340	62-116.0340	↓
37 x 37		62-115.0370	62-116.0370	
40 x 40	50-028.43	62-115.0400	62-116.0400	50-028.41
44,5 x 44,5	↓	62-115.0445	62-116.0445	↓
46 x 46		62-115.0460	62-116.0460	
48 x 48		62-115.0480	62-116.0480	
51,5 x 51,5		62-115.0515	62-116.0515	
66 x 66		62-115.0660	62-116.0660	
72 x 72		62-115.0720	62-116.0720	
92 x 92		62-115.0920	62-116.0920	
96 x 96		62-115.0960	62-116.0960	
110 x 110		62-115.1100	62-116.1100	

Punching tools square



Size with radius (mm)	Knurled nut	Cutting edge	Matrix	Rod
31,2 x 31,2 R 2,0	50-028.42	62-145.0312	62-146.0312	50-028.50
52,2 x 52,2 R 4,5	50-028.43	62-145.0522	62-146.0522	50-028.41



only while stocks last

Punching tools rectangular

Size (mm)	Knurled nut	Cutting edge	Matrix	Rod	
19,5 x 22	50-028.42	62-113.195220	62-114.195220	50-028.50	
21 x 27	↓	62-113.210270	62-114.210270	50-028.40	
22 x 30		62-113.220300	62-114.220300	50-028.50	
22 x 33		62-113.220330	62-114.220330	↓	
22 x 42		62-113.220420	62-114.220420		
22,5 x 45		62-113.225450	62-114.225450	↓	
25 x 50		62-113.250500	62-114.250500		
26 x 27		62-113.260270	62-114.260270		50-028.40
26 x 51		62-113.260510	62-114.260510	50-028.50	
26,5 x 51,5		62-113.265515	62-114.265515	50-028.50	
27 x 31		62-113.270310	62-114.270310	50-028.40	
27 x 33		62-113.270330	62-114.270330	50-028.50	
29 x 71		50-028.44	62-113.290710	62-114.290710	50-028.40
30 x 40		↓	62-113.300400	62-114.300400	50-028.50
30 x 55			62-113.300550	62-114.300550	↓
30,5 x 50			62-113.305500	62-114.305500	
33 x 69	62-113.330690	62-114.330690	62-114.330690	50-028.41	
35 x 65	↓	62-113.350650	62-114.350650	↓	
35 x 82		50-028.43	62-113.350820		62-114.350820
36 x 46	50-028.44	62-113.360460	62-114.360460	50-028.50	
42 x 46	50-028.43	62-113.420460	62-114.420460	50-028.41	
45 x 92	↓	62-113.450920	62-114.450920	↓	
46 x 70		62-113.460700	62-114.460700		
46 x 92		62-113.460920	62-114.460920		
50 x 95		62-113.500950	62-114.500950		
67 x 136		62-113.670136	62-114.670136		
86 x 115		62-113.860115	62-114.860115		

Punching tools rectangular

Size with radius (mm)	Knurled nut	Cutting edge	Matrix	Rod
32,5 x 62,5 R 2,0	50-028.43	62-147.325625	62-148.325625	50-028.83

only while stocks last

### Punching tools HD round



Size (mm)		Cutting edge	Matrix	Rod	Adapter
Ø 16,2	HD	62-500.0162	62-505.0162	62-401.01	50-028.12
Ø 16,5 (M 16)	HD	62-500.0165	62-505.0165	↓	↓
Ø 18,6 (PG 11)	HD	62-500.0186	62-505.0186	62-420.03	
Ø 20,4 (PG 13)	HD	62-500.0204	62-505.0204	↓	
Ø 20,5 (M 20)	HD	62-500.0205	62-505.0205		
Ø 22,3	HD	62-500.0223	62-505.0223		
Ø 22,5 (PG 16)	HD	62-500.0225	62-505.0225		
Ø 25,5 (M 25)	HD	62-500.0255	62-505.0255		
Ø 27,5	HD	62-500.0275	62-505.0275		
Ø 28,3 (PG 21)	HD	62-500.0283	62-505.0283		
Ø 30,0	HD	62-500.0300	62-505.0300		
Ø 30,5	HD	62-500.0305	62-505.0305		
Ø 32,5 (M 32)	HD	62-500.0325	62-505.0325		
Ø 34,0	HD	62-500.0340	62-505.0340	62-401.02	
Ø 37,0 (PG 29)	HD	62-500.0370	62-505.0370	↓	
Ø 40,5 (M 40)	HD	62-500.0405	62-505.0405		
Ø 42,0	HD	62-500.0420	62-505.0420		
Ø 47,0 (PG 36)	HD	62-500.0470	62-505.0470		
Ø 50,5 (M 50)	HD	62-500.0505	62-505.0505		
Ø 54,0 (PG 42)	HD	62-500.0540	62-505.0540		
Ø 58,0	HD	62-500.0580	62-505.0580		
Ø 63,0	HD	62-500.0630	62-505.0630		
Ø 63,5 (M 63)	HD	62-500.0635	62-505.0635		
Ø 68,0	HD	62-500.0680	62-505.0680		

### Punching tools HD square



Size (mm)	Knurled nut	Cutting edge	Matrix	Rod
32,5 x 32,5	50-028.71	62-115.0325	62-116.0325	62-401.03
34 x 34	↓	62-115.0340	62-116.0340	↓
37 x 37		62-115.0370	62-116.0370	





**BAUDAT**  
GmbH & Co. KG

[www.baudat.de](http://www.baudat.de)

New  
Punching tools program

Available now!



Control options for old and new  
plate punchers 62 - 63

Hydraulic plate punchers for  
steel and stainless steel plates 64 - 66

Cases and Accessories  
for plate punchers 67

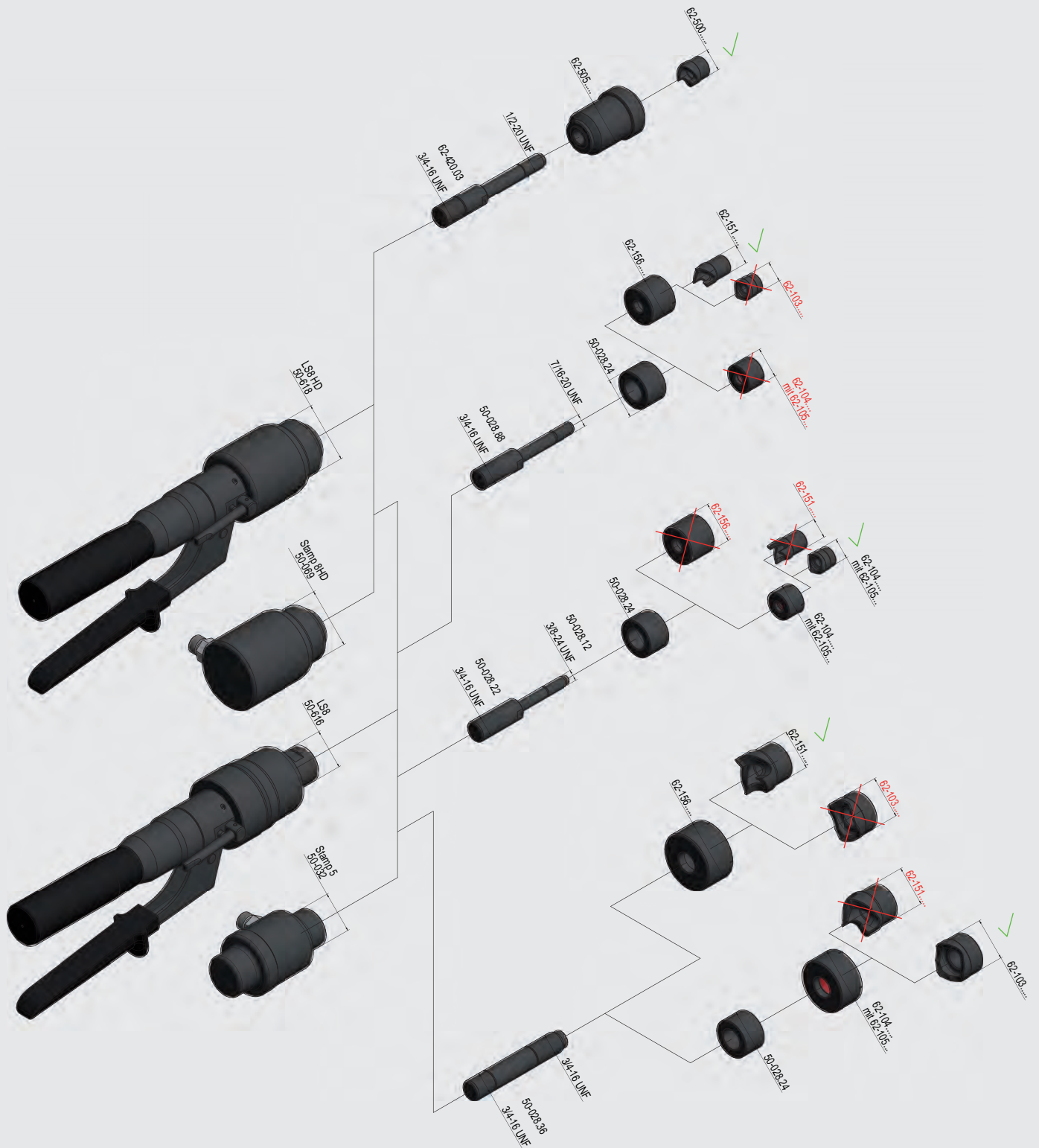
Selection table punching tools  
round / square / special form 68 - 70







Control options with the expiring plate punchers





**NEW**

Hydraulic plate punchers for steel and stainless steel plates

Description:	LS6	LS8 X
Order no.:	50-099	50-631
Punching capacity (max. plate thickness):	2 mm Steel plates: up to Ø 79,0 mm up to 72 x 72 mm up to 42 x 46 mm  3 mm Steel plates: up to Ø 47,0 mm up to 45 x 45 mm up to 25 x 50 mm  3 mm Stainless steel plates: up to Ø 47,0 mm	3 mm Steel plates: up to Ø 120,0 mm up to 110 x 110 mm up to 86 x 115 mm  3 mm Stainless steel plates: up to Ø 60,0 mm
Length:	230 mm	325 mm
Weight:	2,4 kg	2,0 kg
Punching power:	approx. 60 kN	approx. 80 kN
	Usable for building and maintaining control boxes, for car retrofitting and for sanitary application	Ideally suited for quick and frontal punching of control boards
Punches accurate slugs nearly free of burs		
Easy single handed using with small effort		
All parts replaceable		
Punching tools starting page 68		

**NEW**

**NEW**

**Punching tool set LS6 for steel and stainless steel plates**

Description:	Punching tool set in the case metrical	Punching tool set in the case PG
Order no.:	50-637	50-638
Weight:	4,8 kg	4,4 kg
Dimensions:	380 x 280 x 70 mm	
Consists of:	- 1 LS6 - 5 Cutting edges and matrix: Ø 16,5 mm (M16), Ø 20,5 mm (M20), Ø 25,5 mm (M25), Ø 32,5 mm (M32), Ø 40,5 mm (M40) - 2 Rods - 1 Sleeve - 1 Plastic case with insert + cutting paste	- 1 LS6 - 6 Cutting edges and matrix: Ø 15,2 mm (PG9), Ø 18,6 mm (PG11), Ø 20,4 mm (PG13), Ø 22,5 mm (PG16), Ø 28,3 mm (PG21), Ø 30,5 mm - 2 Rods - 1 Sleeve - 1 Plastic case with insert + cutting paste
Replacement case:	70-058 see p. 67	

**NEW**

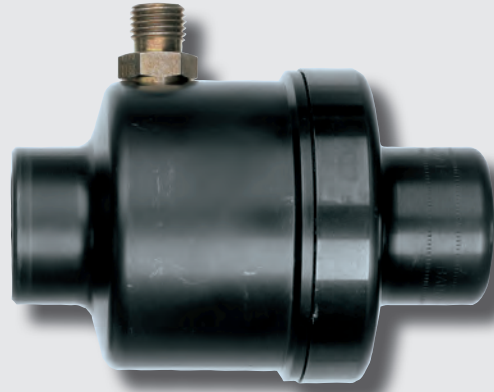
**NEW**

**Punching tool set LS8 X for steel and stainless steel plates**

Description:	Punching tool set in the case metrical	Punching tool set in the case PG
Order no.:	50-643	50-642
Weight:	5,0 kg	4,5 kg
Dimensions:	380 x 280 x 70 mm	
Consists of:	- 1 LS8 X - 5 Cutting edges and matrix: Ø 16,5 mm (M16), Ø 20,5 mm (M20), Ø 25,5 mm (M25), Ø 32,5 mm (M32), Ø 40,5 mm (M40) - 2 Rods - 1 Sleeve - 1 Plastic case with insert + cutting paste	- 1 LS8 X - 6 Cutting edges and matrix: Ø 15,2 mm (PG9), Ø 18,6 mm (PG11), Ø 20,4 mm (PG13), Ø 22,5 mm (PG16), Ø 28,3 mm (PG21), Ø 30,5 mm - 2 Rods - 1 Sleeve - 1 Plastic case with insert + cutting paste
Replacement case:	70-047 see p. 67	



**NEW**



Hydraulic punching tools for steel and stainless steel plates				
Description:	Stamp8 X		Stamp10	
Order no.:	50-634		50-036	
Punching capacity (max. plate thickness):	3 mm Steel plates: up to Ø 120,0 mm up to 110 x 110 mm up to 86 x 115 mm  3 mm Stainless steel plates: up to Ø 60,0 mm			
Length:	104 mm		114 mm	
Weight:	1,0 kg		1,8 kg	
Punching power:	approx. 80 kN at 700 bar approx. 50 kN at 450 bar		approx. 100 kN bei 450 bar	
Max. working pressure:	700 bar		450 bar	
Required oil volume:	58 cm <sup>3</sup>		62 cm <sup>3</sup>	
Usable for building and maintaining control boxes, for car retrofitting and for sanitary application				
Due to the hose connection the tool can be used if there is little space as well				
The tool can be connected to BAUDAT hand, foot, motor and battery pumps				
	Can be connected to following pumps:	Accessories:	Can be connected to following pumps:	Accessories:
	Hand pump HHP8 (50-813)	0,75 m Hose (00-117.21)	Hand pump HHP8 (50-182)	0,75 m Hose (00-117.21)
	Battery pump AP3 (50-180) Battery pump AP4 (50-184)	4,0 m Hose package with hand switch (50-703) or 4,0 m Hose package with foot switch (50-705)	Foot pump HFP12 (50-187)	3,5 m Hose (00-117.19)
			Motor pump HMP1 E (50-190)	4,0 m Hose package with 2x hand switch (50-293) or 4,0 m Hose package with 2x foot switch (50-248)
			Battery pump AP3 450 bar (50-185) Battery pump AP4 450 bar (50-189)	4,0 m Hose package with hand switch (50-703) or 4,0 m Hose package with foot switch (50-705)

Other lengths of hydraulic hose are available on request  
Punching tools starting page 68





Cutting paste

Order no.: 00-169.05



Plastic case with inlet

For tool:	LS6	LS8 X
Order-No.:	70-058	70-047
Dimensions:	380 x 280 x 70 mm	
Weight:	1,0 kg	



Plastic case with inlet

For tool:	Stamp8 X + HHP8 Stamp 10 + HHP8	Stamp 10 + HFP12
Order-No.:	70-076	70-091
Dimensions:	460 x 370 x 140 mm	650 x 450 x 150 mm
Weight:	1,9 kg	4,2 kg



Punching tools round **FOR STEEL AND STAINLESS STEEL PLATES**

Size (mm)	Cutting edge	Matrix	Sleeve	Knurled nut	Rod
Ø 15,2 (PG 9)	62-151.0152	62-156.0152	50-028.24	-	50-028.88
Ø 16,2 (M 16)	62-151.0162	62-156.0162	↓	-	↓
Ø 18,6 (PG 11)	62-151.0186	62-156.0186		-	
Ø 20,4 (PG 13, M 20)	62-151.0204	62-156.0204		-	
Ø 22,5 (PG 16)	62-151.0225	62-156.0225		-	
Ø 25,4 (1", M 25)	62-151.0254	62-156.0254		-	
Ø 28,3 (PG 21)	62-151.0283	62-156.0283	-	-	50-028.36
Ø 30,5	62-151.0305	62-156.0305	-	-	↓
Ø 32,5 (M 32)	62-151.0325	62-156.0325	-	-	
Ø 37,0 (PG 29)	62-151.0370	62-156.0370	-	-	
Ø 40,5 (M 40)	62-151.0405	62-156.0405	-	-	
Ø 47,0 (PG 36)	62-151.0470	62-156.0470	-	-	
Ø 50,8 (M 50)	62-151.0508	62-156.0508	-	-	
Ø 54,0 (PG 42)	62-151.0540	62-156.0540	-	-	
Ø 60,0 (PG 48)	62-151.0600	62-156.0600	-	-	

Other sizes on request

Punching tools round **ONLY FOR STEEL PLATES**

Size (mm)	Cutting edge	Matrix + Elastic insert	Sleeve	Knurled nut	Rod
Ø 63,5 (M 63)	62-103.0635	62-104.0635 + 62-105.10	50-028.24	-	50-028.36
Ø 100,0	62-103.1000	62-104.1000 + 62-105.10	-	-	50-028.36

Other sizes on request

Punching tools square **ONLY FOR STEEL PLATES**

Size (mm)	Cutting edge	Matrix	Sleeve	Knurled nut	Rod
45 x 45	62-115.0450	62-116.0450	-	50-028.43	50-028.41
68 x 68	62-115.0680	62-116.0680	-	50-028.43	50-028.41

Other sizes on request

Punching tool special form **ONLY FOR STEEL PLATES**



Size (mm)	Cutting edge	Matrix	Sleeve	Knurled nut	Rod
33,0 x 17,0 x 10,0 for profil cylinder	62-149.02	62-150.02	62-155.02	50-028.44	62-155.01

Other special forms on request



Rod Thread	Rod Diameter (mm)	Rod Length (mm)	Pre-drill (mm)
7/16" - 20 UNF	Ø 11,1	100	Ø 12
↓	↓	↓	↓
3/4" - 16 UNF	Ø 19,0	108	Ø 20,0
↓	↓	↓	↓

Rod Thread	Rod Diameter (mm)	Rod Length (mm)	Pre-drill (mm)
3/4" - 16 UNF	Ø 19,0	108	Ø 20,0
3/4" - 16 UNF	Ø 19,0	108	Ø 20,0

Rod Thread	Rod Diameter (mm)	Rod Length (mm)	Pre-drill (mm)
3/4" - 16 UNF	Ø 28,0	130	Ø 29,0
3/4" - 16 UNF	Ø 28,0	130	Ø 29,0

Rod Thread	Rod Diameter (mm)	Rod Length (mm)	Pre-drill (mm)
M12 x 1,75	Ø 12,8	107,5	Ø 13,0



Standardsets punching tools		
Standardset punching tools for LS6, LS8 X, Stamp8 X, Stamp 10		
Description:	metrical	PG
Order no.:	62-157	62-158
Punching capacity:	Steel and stainless steel plates up to max. 3 mm	
Consists of:	<ul style="list-style-type: none"> <li>- 4 Cutting edges and matrix:</li> <li>  Ø 16,5 mm (M16)</li> <li>  Ø 20,5 mm (M20)</li> <li>  Ø 25,5 mm (M25)</li> <li>  Ø 32,5 mm (M32)</li> <li>  Ø 40,5 mm (M40)</li> <li>- 2 Rods</li> <li>- 1 Sleeve</li> </ul>	<ul style="list-style-type: none"> <li>- 6 Cutting edges and matrix:</li> <li>  Ø 15,2 mm (PG9)</li> <li>  Ø 18,6 mm (PG11)</li> <li>  Ø 20,4 mm (PG13)</li> <li>  Ø 22,5 mm (PG16)</li> <li>  Ø 28,3 mm (PG21)</li> <li>  Ø 30,5 mm</li> <li>- 2 Rods</li> <li>- 1 Sleeve</li> </ul>





Selection table pumps 73

Hand pump 74

Foot pump 74



Motor pumps 75 - 77

Battery pumps 78

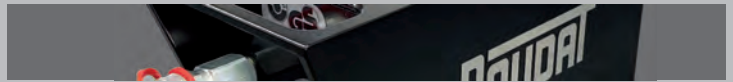
Accessories for battery-operated tools 79





Selection table pumps				
Hand pumps	Pressure	Recommendation for our	Order no.	Page
HHP8 for hose connection	450 bar	Punching tool	50-182	74
HHP8 for hose connection	700 bar	Punching tool	50-813	74
Foot pump				
HFP12	450 bar	Punching tool / Hydraulic cutters	50-187	74
Motor pumps				
HMP1 single-acting	450 bar	Hydraulic cutters	50-186	75
HMP1 E single-acting	450 bar	Punching tool	50-190	75
HMP2 WE single-acting alternating current	450 bar	Hydraulic cutters	50-101	76
HMP2 WE single-acting alternating current	700 bar	Hydraulic cutters	50-097	76
HMP2 DE single-acting three phase current	450 bar	Hydraulic cutters	50-102	76
HMP2 DE single-acting three phase current	700 bar	Hydraulic cutters	50-103	76
HMP2 WE RH double-acting alternating current	450 bar	Hydraulic cutters	50-106	76
HMP2 WE RH double-acting alternating current	700 bar	Hydraulic cutters	50-096	76
HMP2 DE RH double-acting three phase current	450 bar	Hydraulic cutters	50-104	76
HMP2 DE RH double-acting three phase current	700 bar	Hydraulic cutters	50-105	76
HMP3 DE single-acting three phase current	420 bar	Hydraulic cutters	50-056	77
HMP3 DE D single-acting three phase current	420 bar	Hydraulic cutters	50-135	77
HMP3 DE RH double-acting three phase current	420 bar	Hydraulic cutters	50-057	77
HMP3 DE RH D double-acting three phase current	420 bar	Hydraulic cutters	50-136	77
Battery pumps				
AP3	450 bar	Punching tool / Hydraulic cutters	50-185	78
AP3	700 bar	Punching tool	50-180	78
AP4	450 bar	Punching tool / Hydraulic cutters	50-189	78
AP4	700 bar	Punching tool	50-184	78

The hand, foot, motor and battery pumps described on the following pages only represent an overview with the general properties. The devices can be supplied with a fixed or selectable pressure in different versions. An adaption to individual applications is generally possible. We would be glad to determine the optimal combination for your application.



**Hydraulic single-acting hand pump**

Description:	HHP8
Order no.:	50-182 for hose connection 450 bar 50-813 for hose connection 700 bar
Length:	270 mm
Weight:	1,6 kg
Pressure fixed to	450 or 700 bar
Output:	approx. 0,7 cm <sup>3</sup> /stroke
Usable oil volume:	approx. 67 cm <sup>3</sup>
Hand force:	19 kp
Can be combined with our punching tools	



**Hydraulic single-acting foot pump**

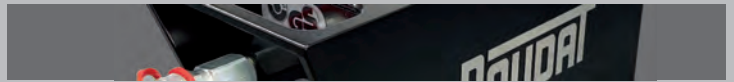
Description:	HFP12
Order no.:	50-187
Dimensions:	345 x 200 x 105 mm
Weight:	3,4 kg
Pressure fixed to	450 bar
Output:	approx. 1,0 cm <sup>3</sup> /stroke
Usable oil volume:	approx. 70 cm <sup>3</sup>
Foot power:	approx. 40 kp at 450 bar
Connection:	M16x1,5 external thread with 24° inner cone
Non-tilting base plate	
Can be combined with our hydraulic cutters and punching tools	



**Motor pumps**

Description:	HMP1	HMP1 E
Order no.:	50-186	50-190
Dimensions:	290 x 135 x 295 mm	
Weight:	10,6 kg	
Pressure fixed to:	450 bar	
Pressureless Output:	approx. 0,3 l/min	
Usable oil volume:	approx. 0,3 l	
Voltage:	Alternating current 230 V - 50 Hz	
Power input:	0,35 kW	
Duty cycle:	50% duty cycle S3	
Motor remote control:	24 V Safety voltage	
Connection:	CA3 - Hirschmannstecker	
Hydraulic connection:	Quick coupling Cejn-series 115	
	Drop pressure in case the switch is released	Adhered pressure in case the switch is released
	Can be combined with our hydraulic cutters	Can be combined with our punching tools

Made in Germany and certified according to the German GS norm



Motor pumps				
Description:	HMP2 WE	HMP2 DE	HMP2 WE RH	HMP2 DE RH
Order no.:	50-101 at 450 bar 50-097 at 700 bar	50-102 at 450 bar 50-103 at 700 bar	50-106 at 450 bar 50-096 at 700 bar	50-104 at 450 bar 50-105 at 700 bar
Dimensions:	320 x 215 x 380 mm		340 x 215 x 380 mm	
Weight:	23,0 kg			
Pressure fixed to:	450 bar or 700 bar			
Pressureless Output:	approx. 2,45 l/min at 450 bar approx. 1,7 l/min at 700 bar			
Usable oil volume:	approx. 1,3 l			
Voltage:	Alternating current 230 V - 50 Hz	Three phase current 400 V - 50 Hz	Alternating current 230 V - 50 Hz	Three phase current 400 V - 50 Hz
Power input:	1,1 kW			
Duty cycle:	50% duty cycle S3			
Motor remote control: Connection:	24 V Safety voltage CA3 - Hirschmannstecker			
Hydraulic connection:	Quick coupling Cejn-series 115		P Quick coupling Cejn-series 115 R Quick coupling Cejn-series 117	
The motor pumps HMP2 are not designed for continuous operation Can be combined with our hydraulic cutters				

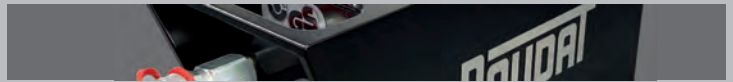


#### Motor pumps

Description:	HMP3 DE	HMP3 DE RH
Order no.:	50-056 505-135 contin. operation	50-057 50-136 contin. operation
Dimensions:	720 x 400 x 725 mm	
Weight:	79,0 kg	
Pressure fixed to:	420 bar	
Pressureless Output:	approx. 4,2 l/min	
Usable oil volume:	approx. 2,4 l	
Voltage:	Three phase current 400 V - 50 Hz	
Power input:	2,2 kW	
Duty cycle:	50% duty cycle S3	
Motor remote control:	24 V Safety voltage	
Connection:	CA3 - Hirschmannstecker	
Hydraulic connection:	Quick coupling Cejn-series 115	P Quick coupling Cejn-series 115 R Quick coupling Cejn-series 117

Can be combined with our hydraulic cutters





Battery pumps single-acting		
Description:	AP3	AP4
Order no.:	50-185 at 450 bar 50-180 at 700 bar	50-189 at 450 bar 50-184 at 700 bar
Dimensions:	294 x 126 x 120 mm	321 x 156 x 150 mm
Weight:	5,8 kg incl. battery	10,0 kg incl. battery
Pressure fixed to:	450 bar or 700 bar	
Pressureless Output:	approx. 0,37 l/min at 450 bar approx. 0,25 l/min at 700 bar	approx. 0,84 l/min at 450 bar approx. 0,71 l/min at 700 bar
Usable oil volume:	approx. 0,3 l	approx. 0,5 l
Voltage:	18 V Lithium ion battery	36 V Lithium ion battery
Capacity:	3,0 Ah	2,6 Ah
Duty cycle:	50% duty cycle S3	
Motor remote control: Connection:	24 V Safety voltage CA3 - Hirschmannstecker	
Hydraulic connection:	Quick coupling Cejn-series 115	
	LED display battery charging	
	Charging time: 22 min	
	Can be combined with our hydraulic cutters and Punching tools	Can be combined with our hydraulic cutters
Made in Germany and certified according to the German GS norm		





**Makita Battery 18 V, Li-Ion**

Order no.: 00-109.15 for 3,0 Ah  
00-109.33 for 5,0 Ah

Weight: 0,6 kg

Battery voltage: 18 V

Battery capacity: 3,0 Ah or 5,0 Ah

Charging time 3,0 Ah: approx. 22 min.  
Charging time 5,0 Ah: approx. 45 min.

Cell technology: Li-Ion

Can be combined with our battery pump AP3



**Makita Battery charger for 18 V Li-Ion-Batteries**

Order no.: 00-109.14

Weight: 1,0 kg

Mains voltage: 230 V

Voltage range: 18 V

Charging time 3,0 Ah: approx. 22 min.  
Charging time 5,0 Ah: approx. 45 min.



**Makita Battery 36 V / 2,6 Ah, Li-Ion**

Order no.: 00-109.23

Weight: 1,3 kg

Battery voltage: 36 V

Battery capacity: 2,6 Ah

Charging time 2,6 Ah: approx. 22 min.

Cell technology: Li-Ion

Can be combined with our battery pump AP4



**Makita Battery charger for 36 V Li-Ion-Batteries**

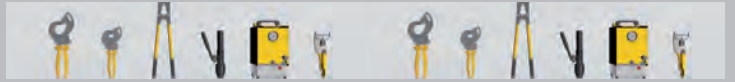
Order no.: 00-109.24

Weight: 1,0 kg

Mains voltage: 230 V

Voltage range: 36 V

Charging time 2,6 Ah: approx. 22 min.



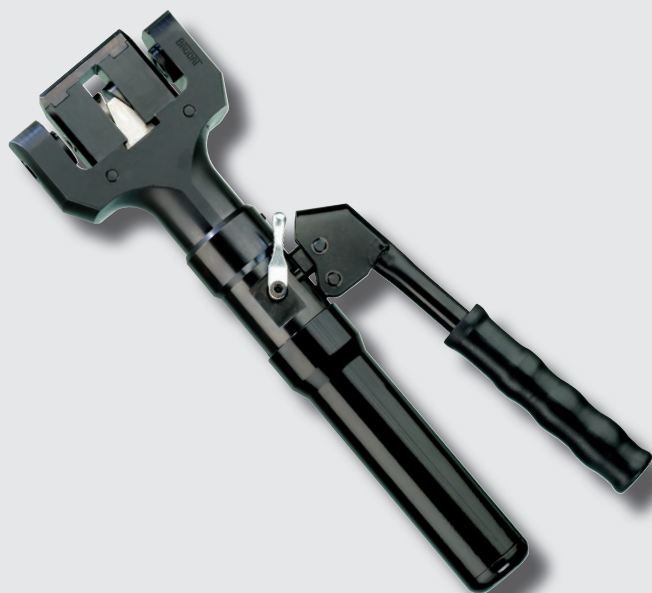
Special tools

81 - 82



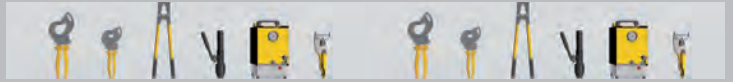
Punching tool	
Hydraulic punching tool	
Order no.:	45-413
Punching capacity:	for profiles up to 3 mm wall thickness
Length:	410 mm
Weight:	4,0 kg

Punching tools round		
Size (mm)	Plunger	Cutting bush
Ø 9,0	45-090.24	45-090.23
Ø 11,0	45-090.12	45-090.13



Double-sided punching tool	
Hydraulic double-sided punching tool	
Order no.:	45-090
Punching capacity:	for U-profiles with a width of 65 mm and up to 3 mm wall thickness
Length:	390 mm
Weight:	3,4 kg

Punching tools round		
Size (mm)	Plunger	Cutting bush
Ø 11,0	45-413.04	45-413.03



**Flange press**

Hydraulic flange press for tubes

Order no.:	45-429
Object to be pressed:	Pipe Ø 40 x 1,5
Length:	300 mm
Weight:	8,0 kg
Recommended operational pressure:	200 - 220 bar
Connection:	G 1/8



**Notching tool for saw blades**

Hydraulic notching tool for punching saw blades

Order no.:	45-008
Length:	475 mm
Weight:	23 kg
max. working pressure:	160 bar





# **BAUDAT**

**GmbH & Co. KG**

Alte Poststrasse 20  
D-88525 Dürmentingen

Tel.: +49 (0) 7371 / 506-0  
Fax +49 (0) 7371 / 506-16

Email: [info@baudat.de](mailto:info@baudat.de)  
[www.baudat.de](http://www.baudat.de)

Subject to modifications and errors excepted.

2021/2022

D

15-000